



Network of Partnership Schools

Advanced Professional Learning

November 1, 2024



THE OHIO STATE UNIVERSITY
CENTER ON EDUCATION AND TRAINING FOR EMPLOYMENT



Ohio Statewide
Family Engagement Center
at The Ohio State University

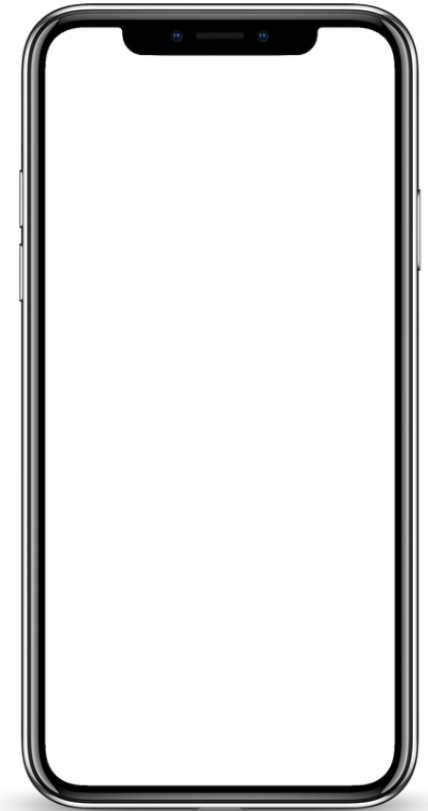
Every Child.
Every Family.
Every School.



ohiofamiliesengage.osu.edu

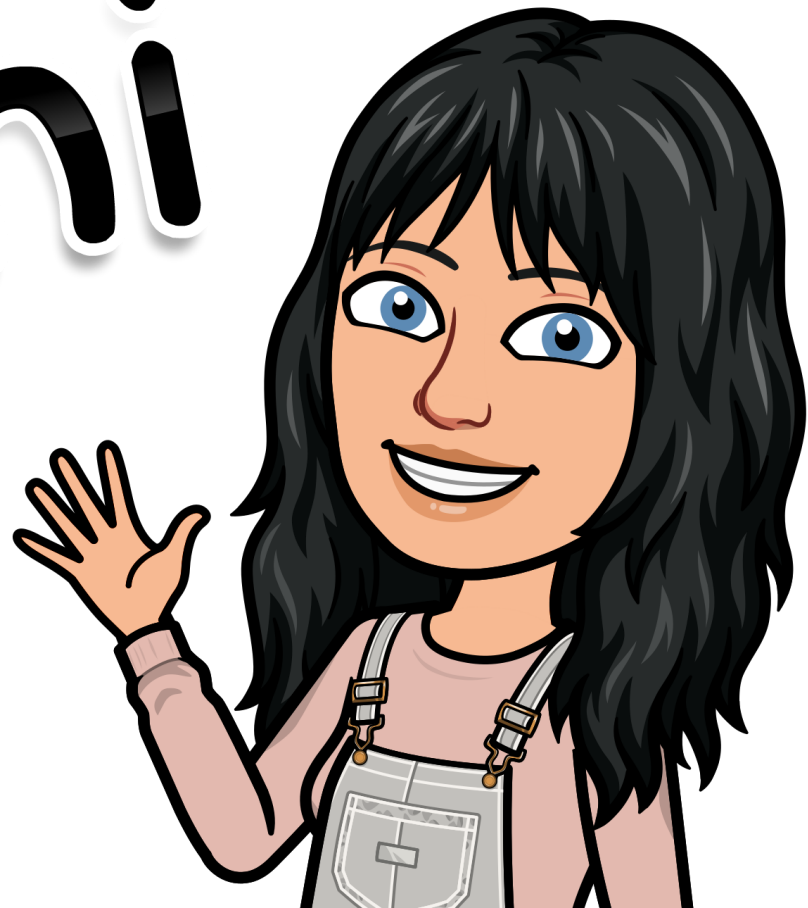
HOW TO **GET CONNECTED**

- 1 Bring your phone or tablet
- 2 Get ready to scan QR codes
 - Open the camera app
- 3 Interact and engage!



Sign In & Say Hello!

hi



Aims

TODAY'S GOALS

- 1 Explain the new resources and supports available to Ohio schools from the Ohio Network and NNPS.
- 2 Open up and explore the new Refresher Modules available to everyone in the Network
- 3 Hear from other Ohio educators about how they are strengthening their family-school-community partnerships this year.

Getting Started



Menti.com
Code: 1840 7466



Join at menti.com | use code 1840 7466

Mentimeter

How long have you been in the network?

6

6



4

1



This is my first year!

2 years

3 years

4+ years



Account



Content



Design



Settings



Help & Feedback

Join at menti.com | use code **1840 7466**

Mentimeter



Account



Content



Design



Settings



Help &
Feedback



What has contributed to your team's success?

25 responses



Join at menti.com | use code **1840 7466**



What support do you need?

16 responses



Account



Content



Design



Settings



Help &
Feedback

Welcome **NEW** Partnership Schools!



The Partnership Schools
approach is *Ohio's*
implementation of the
National Network of
Partnership Schools

Same/NEW

Same

- Evidence-based model
- Dr. Joyce Epstein & John Hopkins University
- Handbook
- 6 Types
- Overlapping Spheres
- School Teams
- Focus on schools serving less advantaged families

NEW!

- Delivery model
- Flexibility: anytime October 1 – June 30
- School leader as critical component
- Emphasis on the team
- Interactive website
- One Year Action Plans are submitted on a rolling basis for new schools (after module 4) and for existing schools in the spring (via Spring surveys from OSU)
- “Booster Sessions” now called “Advanced Professional Learning Sessions”



2-Ways

DELIVERY MODEL



Network of Partnership Schools

1st Way:

NEW SCHOOLS



Network of Partnership Schools

Seminar **START**

☐ **New** School leaders, register for **Ohio Partnership Schools** via our website.

- A **baseline evaluation** to school leaders is part of registration.

Session 1

- ☐ An email provides school and district leaders with a link to **Session 1: Overview of School Partnership Approach**.
- ☐ District and school leaders **complete Session 1** independently.
- ☐ A **check in** is required to advance to Session 2. OSU responds to check in.

Seminar **START**

- ❑ **NEW school leaders, register for Ohio Partnership Schools** via our website.
- A **baseline evaluation** to school leaders is part of registration.

Session 1

- ❑ An email provides school and district leaders with a link to **Session 1: Overview of School Partnership Approach**.
- ❑ District and school leaders **complete Session 1** independently.
- ❑ A **check in** is required to advance to Session 2. OSU responds to check in.

Session 2

- ❑ An email provides school and district leaders with a link to **Session 2: Leading for Family Engagement through the Partnership School Approach**.
- ❑ District and school leaders **complete Session 2** independently.
- ❑ A **check in** is required for school leaders to advance to the next session. OSU responds to check in.
 - District Leaders upload Annual Leadership Plan
 - School leaders upload school goal(s)
- ❑ **District leaders stop** after completing the check-in. An email will send district leaders an **evaluation**.

Seminar **START**

- ❑ **NEW school leaders, register for Ohio Partnership Schools** via our website.

- A **baseline evaluation** to school leaders is part of registration.

Session 1

- ❑ An email provides school and district leaders with a link to **Session 1: Overview of School Partnership Approach**.
- ❑ District and school leaders **complete Session 1** independently.
- ❑ A **check in** is required to advance to Session 2. OSU responds to check in.

Session 2

- ❑ An email provides school and district leaders with a link to **Session 2: Leading for Family Engagement through the Partnership School Approach**.
- ❑ District and school leaders **complete Session 2** independently.
- ❑ A **check in** is required for school leaders to advance to the next session. OSU responds to check in.
 - District Leaders upload Leadership Plan
 - School leaders upload school goal(s)
- ❑ **District leaders stop** after completing the check-in. An email will send district leaders an **evaluation**.

Session 3

- ❑ An email provides school leaders with directions for next steps and **Session 3: Building Your School Partnership Team**.
- ❑ School leaders **facilitate and complete Session 3** with school Partnership Teams.
- ❑ A **check in** is required for school leaders and school teams to advance to the next session. OSU responds to check in.
 - School Leaders upload school Partnership Team roster

Seminar **START**

- ❑ **NEW school leaders, register for Ohio Partnership Schools** via our website.

- A **baseline evaluation** to school leaders is part of registration.

Session 1

- ❑ An email provides school and district leaders with a link to **Session 1: Overview of School Partnership Approach**.
- ❑ District and school leaders **complete Session 1** independently.
- ❑ A **check in** is required to advance to Session 2. OSU responds to check in.

Session 2

- ❑ An email provides school and district leaders with a link to **Session 2: Leading for Family Engagement through the Partnership School Approach**.
- ❑ District and school leaders **complete Session 2** independently.
- ❑ A **check in** is required for school leaders to advance to the next session. OSU responds to check in.
 - District Leaders upload Leadership Plan
 - School leaders upload school goal(s)
- ❑ **District leaders stop** after completing the check-in. An email will send district leaders an **evaluation**.

Session 3

- ❑ An email provides school leaders with directions for next steps and **Session 3: Building Your School Partnership Team**.
- ❑ School leaders **facilitate and complete Session 3** with school Partnership Teams.
- ❑ A **check in** is required for school leaders and school teams to advance to the next session. OSU responds to check in.
 - School Leaders upload school Partnership Team roster

Session 4

- ❑ An email provides school leaders with next steps and **Session 4: Taking Action for School Partnerships**.
- ❑ School leaders **facilitate and complete Session 4** with school Partnership Teams.
- ❑ A **check in** is required for school leaders and school teams to end the seminar. OSU responds to check in.
 - School Leaders submit One Year Action Plan
- ❑ **Complete a final evaluation**.
 - Upon completion, participants receive a certificate for contact hours and access to Network page

2nd Way:

EXISTING SCHOOLS (IN-NETWORK)



Network of Partnership Schools

REFRESHER MODULES

No registration needed to access refresher modules for in-network members.

1. Visit website
ohiofamiliesengage.osu.edu/ohio-network-of-partnership-schools
2. Scroll to **Members Page**
3. Scroll to **Refresher Modules**
4. Select **Session 1**
5. **Start Course**



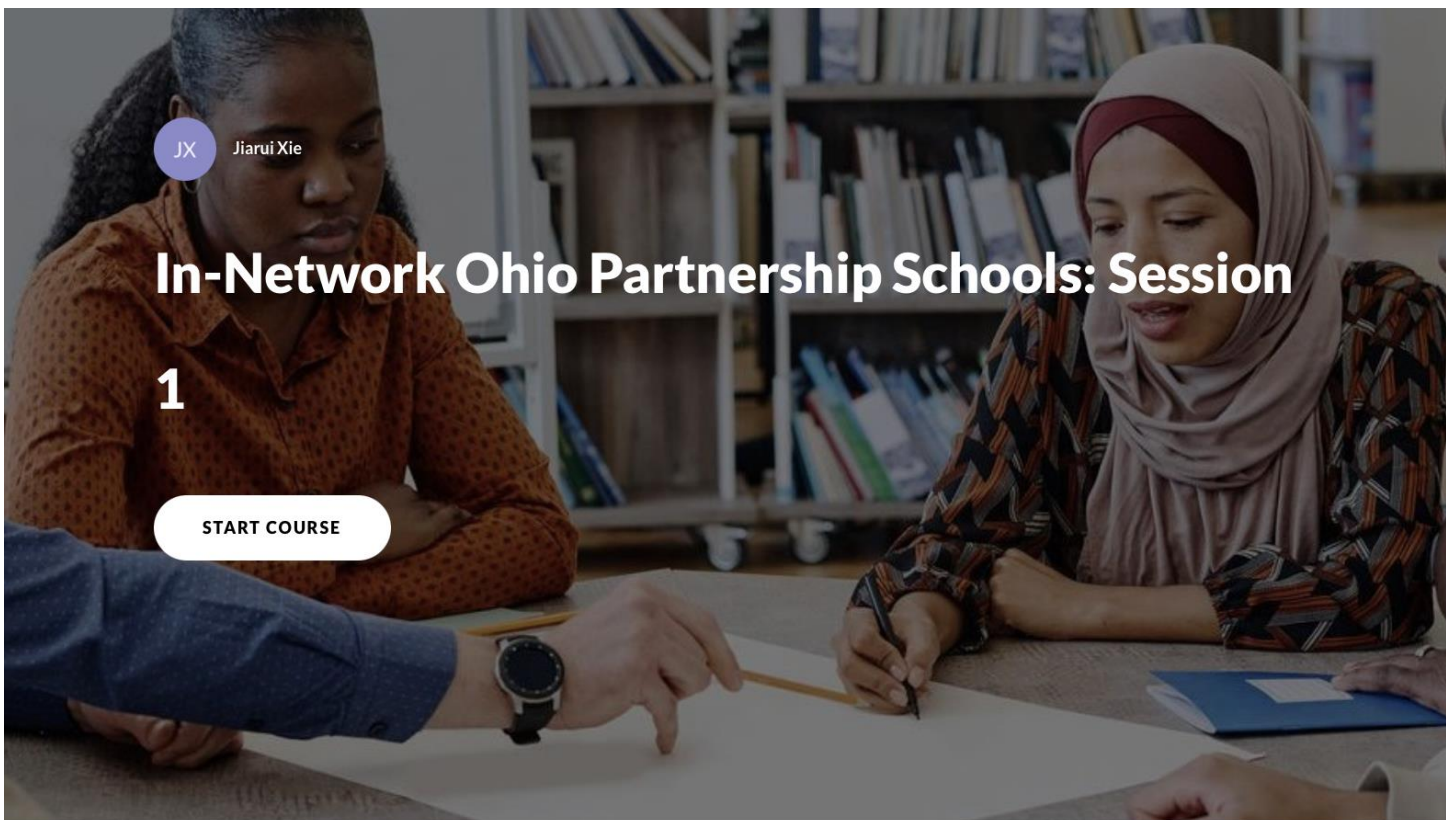
JX

Jiarui Xie

In-Network Ohio Partnership Schools: Session

1

START COURSE



REFRESHER MODULES

Take 10 minutes to explore Sessions 2-4.

Notecatcher:



Choice 1: Quiet space for individual work
Stay in the main room

Choice 2: Ask questions, get support
Join the Q&A room

Choice 3: Team Collaboration
Join a breakout room with colleagues

go.osu.edu/notebook

GROUP REFLECTION





What Ohio Partnership Schools *Receive*:

- 4 online orientation modules
- Individualized coaching
- Monthly community of practice meetings
- Subscription to email newsletter
- Advanced professional learning
- Annual evaluation and recognition for promising practices
- Membership in NNPS is no cost to districts and schools



What Ohio Partnership Schools *Give*:

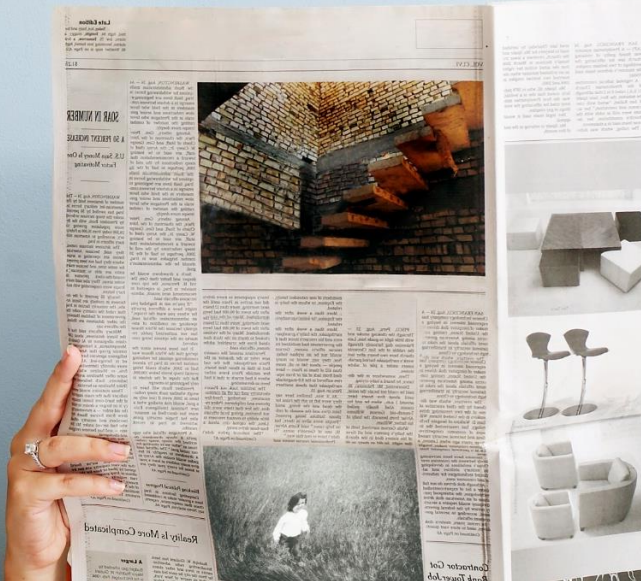
- **Spring surveys** once each year for your District Leader, Building Leader, and school Partnership Team Members
- School Partnership Team **roster and annual action plan** once each year
- Updated district and school **contact information**
- Share with other network members about your work





Headlines

What is a piece of good news or success story you would like to share about your family engagement work?



Are you ready to **GO** ?

- Red means you need to stop and think about how you are going to apply the resources shared today
- Yellow means you will proceed with caution.
- Green means ready to go!



Center Announcements



SELF-PACED SEMINAR

Partnerships for Literacy

Registration is open!

Ohio Elementary Schools can access four interactive modules. Learn how to improve your quantity and quality of supports for family engagement in early literacy!

 Ohio Statewide
Family Engagement Center
at The Ohio State University



REGISTER



HANDS ON WEBINAR



HOW to...

Engage Families of Adolescents

NOVEMBER 5, 2024

11AM – NOON EST

Last day to register is 11/4



[REGISTER HERE](#)



UPCOMING SEMINAR

Multi-Tiered Family Engagement

START DATE:
DECEMBER 3, 2024

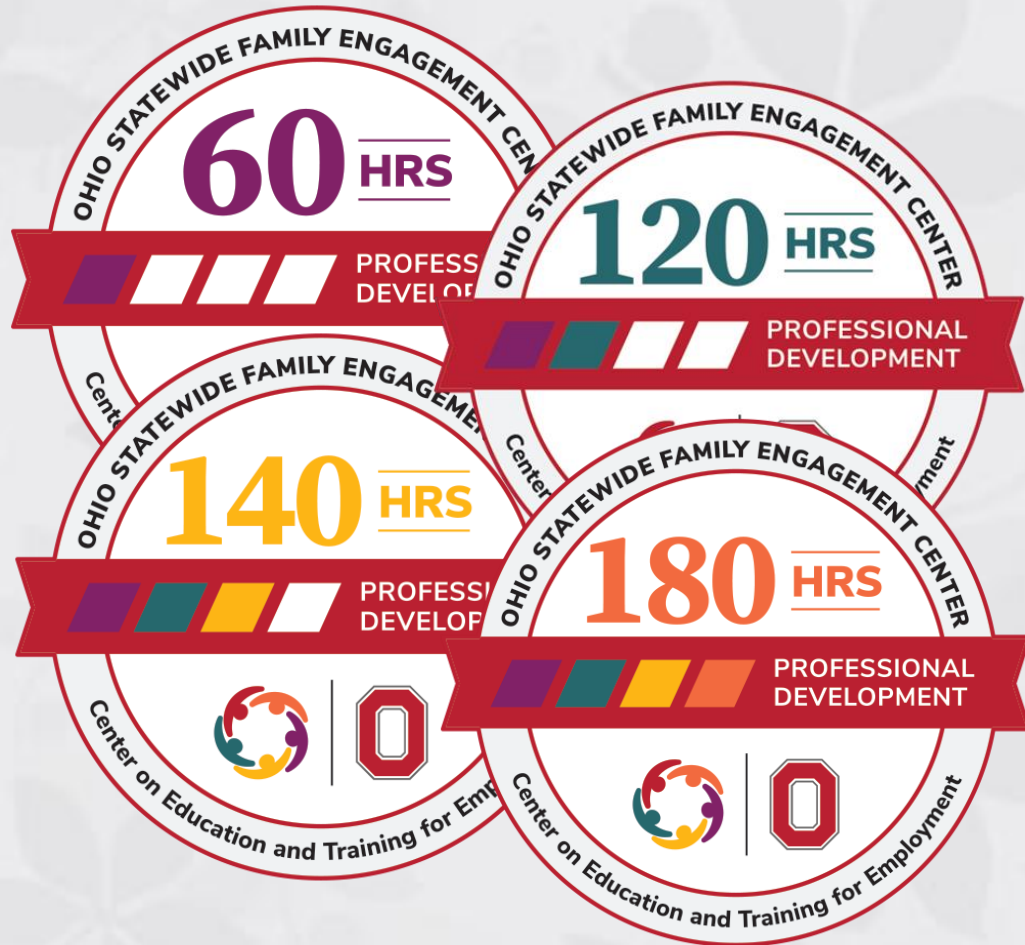
Registration open 8/20 to 11/25



APPLY HERE



Access Professional Learning & Earn a Digital Badge!



SEMINAR CATALOG



Apply today!

Statewide Advisory Council

We are now recruiting families to serve on our 2025 Statewide Advisory Council! Must have a child enrolled in a K-12 public school to qualify. Learn more and apply by **December 9, 2024** at <https://go.osu.edu/sac2025>



The
STATE ADVISORY COUNCIL
for The Ohio Statewide
Family Engagement Center



Sign up for our News & Guidance for Educators!



<https://go.osu.edu/newsguide>



Aims

TODAY'S GOALS

- 1 Explain the new resources and supports available to Ohio schools from the Ohio Network and NNPS.
- 2 Open up and explore the new Refresher Modules available to everyone in the Network
- 3 Hear from other Ohio educators about how they are strengthening their family-school-community partnerships this year.

Evaluation



Ohio Statewide
**Family
Engagement
Center**
— at The Ohio State University —
Professional Learning



surveymonkey.com/r/ONPSAdvancedTopics



THE OHIO STATE UNIVERSITY

CENTER ON EDUCATION AND
TRAINING FOR EMPLOYMENT



Ohio Statewide
**Family
Engagement
Center**
— at The Ohio State University —
Professional Learning



OhioSFEC@osu.edu



@OhioEngage



Ohiofamiliesengage.osu.edu

Boone, B. & Gherman, W. (2024). *Advanced Professional Learning for ONPS*. [PowerPoint slides].
© The Ohio State University

The contents of this presentation were developed under a grant from the U.S. Department of Education (Department). The Department does not mandate or prescribe practices, models, or other activities described or discussed in this document. The contents of this presentation may contain examples of, adaptations of, and links to resources created and maintained by another public or private organization. The Department does not control or guarantee the accuracy, relevance, timeliness, or completeness of this outside information. The content of this presentation does not necessarily represent the policy of the Department. This publication is not intended to represent the views or policy of, or be an endorsement of any views expressed or materials provided by, any Federal agency. [[89 FR 70333](#), Aug. 29, 2024]