



#GrandUnderstandings

Our Message to GrandFamilies

We recognize that raising your grandchildren or other relatives can require a lot of you. Be assured, you are giving them a better present and future. At the Ohio Statewide Family Engagement Center- we see you and we hear you. We want to support you in working together with schools and the community. Below you will find some resources about schools and family well-being- created with help from grandfamilies. When families, schools, and communities work together, children are more successful in learning and in life.

SCHOOLS ARE HERE TO HELP



If you haven't already, reach out to your grandchild's school with your questions. Schools can help with learning supports, behavior, mental and physical health, and your family's overall well being.

Consider reaching out to one of these staff members for more information:

- teacher
- school counselors
- school social worker
- principal
- schools nurse

THERE ARE RESOURCES FOR YOU



Many grandfamilies and kinship families find it helpful to connect to others and the community. Joining a group of others with similar lives is a good idea. To find a group or other supports to help your family along the way, consider these Ohio resources. Click on each one or scan the QR code for more information.



Ohio Statewide
**Family
Engagement
Center**



THE OHIO STATE UNIVERSITY

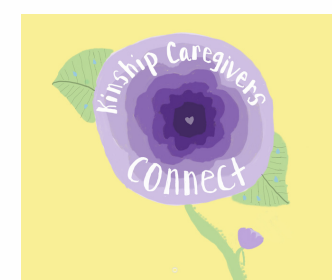
CENTER ON EDUCATION AND
TRAINING FOR EMPLOYMENT

OhioKAN



Kinship navigator program
ohiokan.jfs.ohio.gov

Kinship Caregivers
Connect



Online support group
kinshipcaregiversconnect.com/

Ohio Grandparent/
Kinship Coalition



Advocacy organization
<https://ohiograndparentkinship.org/>



[go.osu.edu/
grandresources](https://go.osu.edu/grandresources)