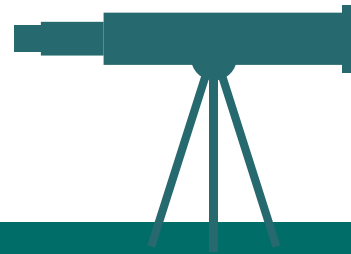


SECOND ANNUAL



# Ohio Family Engagement

— LEADERSHIP SUMMIT —



CHARTING NEW  
TERRITORIES

*in Family Engagement*



THE OHIO STATE  
UNIVERSITY

CENTER ON EDUCATION AND  
TRAINING FOR EMPLOYMENT



Ohio Statewide  
**Family  
Engagement  
Center**

— at The Ohio State University —

# Family Engagement at the Ohio Department of Education



Alexandra Nardo · September 17, 2021

# Introduction

- Alexandra Nardo, *Family and Children Community Administrator*, Office of Whole Child Supports

# Agenda

Each Child, Our Future

Whole Child Framework, Office  
of Whole Child Supports

Whole Child Framework –  
Family Engagement

Family Engagement Supports

Questions and Discussion



# Each Child, Our Future



# Office of Whole Child Supports Programs

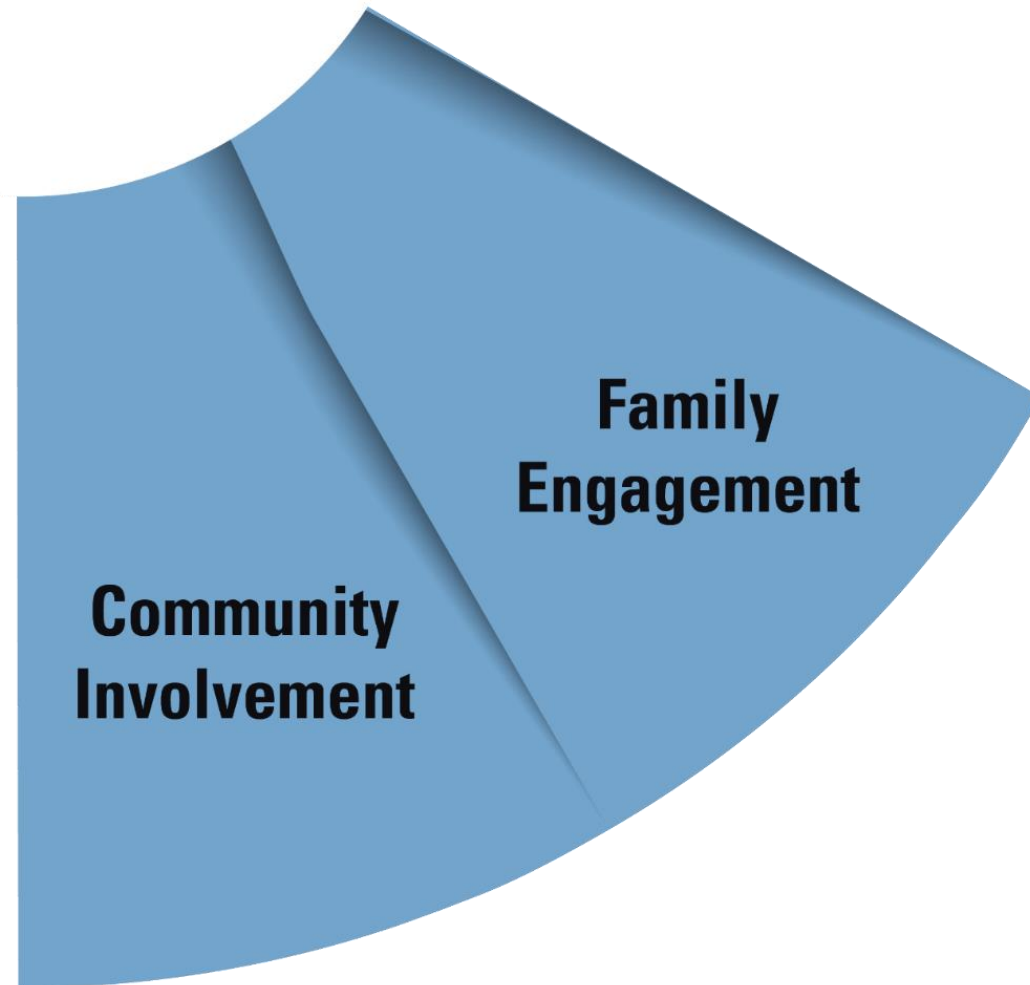
- School climate and culture
- Social and emotional learning
- Regular student attendance
- Positive behavioral intervention and supports (PBIS)
- Mental and Behavioral health
- School-based healthcare
- Anti-harassment intimidation and bullying
- School safety
- Family and community engagement
- Vulnerable youth programs

# The Whole Child Framework



# Engaging Others to Support Student Wellness and Success

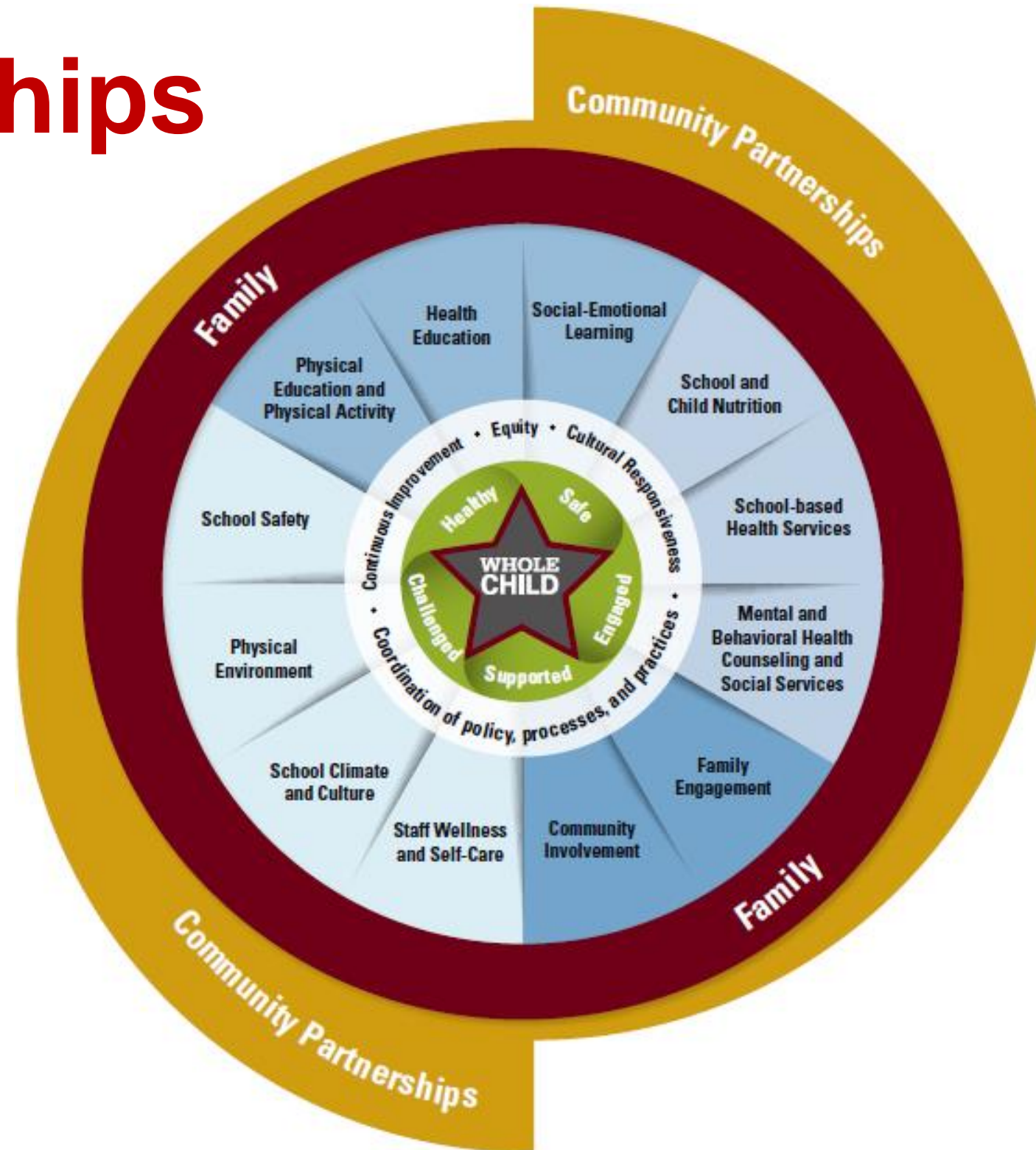
- Family Engagement
- Community Engagement





# Partnerships

- Families as Partners
- Community Partners



# Whole Child Website

[Home](#) > [Integrated Student Supports](#) > [Ohio Supports the Whole Child](#)

## QUICK LINKS

- » [Whole Child Advisory Group](#)
- » [Whole Child Resources](#)

## Ohio Supports the Whole Child

### Supporting the Whole Child

Ohio's strategic plan for education, *Each Child, Our Future*, puts the whole child at the center, where each component of the plan works harmoniously to support a whole-child approach. Likewise, *Ohio's Whole Child Framework* also places the whole child at the center, with district, school, family and community supporting the needs of the whole child using a comprehensive approach. A whole child approach broadens district and school focus beyond academics to include meeting students social-emotional, physical and safety needs. The *Whole Child Framework* provides a blueprint to meet these whole child needs, which are foundational to a child's intellectual and social development and necessary for students to fully engage in learning and school.



# Feedback from Families

- Ohio Statewide Family Engagement Center's State Advisory Council
- November 2020



# Ways to share with families

- Social media (Facebook groups and twitter) and websites and webpages
- Video tutorials (via Twitter or Facebook and websites)- Shorter is better!
- Virtual Town Hall
- Paper copies of brochure/information
  - Make sure information is translated!
- Incorporated into newsletters or weekly messages from schools/principals
- Condensed infographic
- A checklist that families and caregivers can use
- Factsheet in ordinary language
- Webinar for parents with modules/workshops around the concepts
- Shared at multiple levels- conferences, school staff meetings, school events
- Sign up for small group discussions about the framework



# Who should share with families

- Schools should be sending the information to their own communities
- Information coming from kids to the home- toolkit for teachers to share with students
- Responsibility of trained Whole Child Framework Advocates
- Utilizing/partnering with PTAs/PTO and other community organizations

# How to present to families

- Smaller pieces--not all at once leads to more meaningful understanding
- Personalization is key. Important points that parents need to know---how does this impact their family/child?
- Easily accessible and interactive for all families
- Two-way communication is important!
  - Ask families: What are your thoughts on what our students need?
- Scenarios provided that illustrate the tenants and components
- Presented multiple times through multiple channels
- Families should be involved in plans for implementation/dissemination in each school context
  - Inclusive implementation teams
- Important to have staff/teacher buy-in
- Provide additional resources
- Leverage community partners/other groups in the schools
- Used/shared in team meetings that involve families (IEP meetings, etc.)

# Family Engagement at ODE

Initiatives and programs to support schools and districts supporting families.

State Support Teams –  
Family Engagement Leads

Cross-Agency Family  
Engagement Team

Website for families of students  
with disabilities

Ohio's State Board Policy on  
Family Engagement

# ESC Family and Community Partnership Liaisons

**Response to  
COVID – 19**

**Capacity building for  
schools and districts  
to support their  
highest need  
students and families**

**Partnership with  
Ohio Statewide  
Family  
Engagement  
Center**



# Questions and Discussion

Contact:

Alexandra Nardo

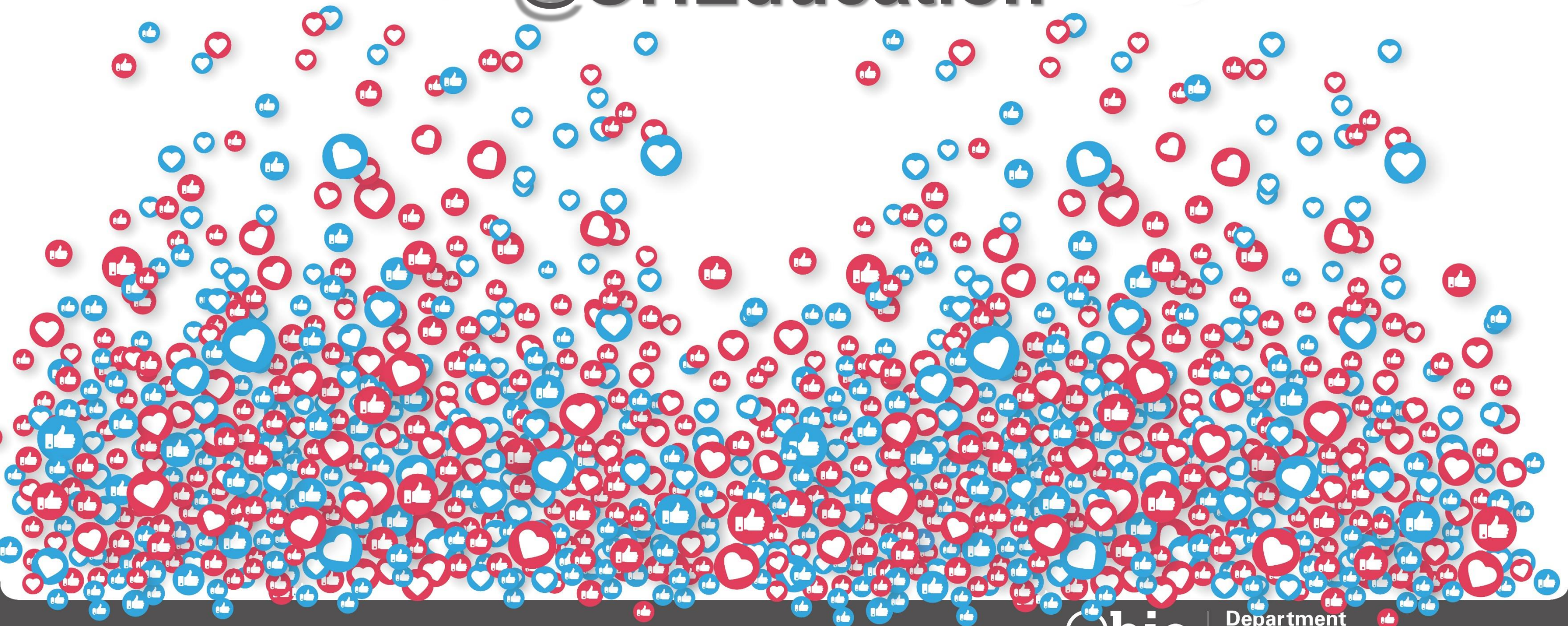
[Alexandra.nardo@education.ohio.gov](mailto:Alexandra.nardo@education.ohio.gov)

614-995-5443





@OHEducation





**Share your learning  
community with us!**

**#MyOhioClassroom**



**Celebrate educators!**

**#OhioLovesTeachers**

THANK YOU FOR WATCHING!

OhioFamiliesEngage.osu.edu



Ohio Statewide  
**Family  
Engagement  
Center**

—at The Ohio State University—



Ohio Statewide Family  
Engagement Center



OhioSFEC@osu.edu



@OhioEngage



@OhioEngage