

SECOND ANNUAL



# Ohio Family Engagement

— LEADERSHIP SUMMIT —



*CHARTING NEW  
TERRITORIES*  
*in Family Engagement*



THE OHIO STATE  
UNIVERSITY

CENTER ON EDUCATION AND  
TRAINING FOR EMPLOYMENT



Ohio Statewide  
**Family  
Engagement  
Center**

— at The Ohio State University —



Family Engagement in Middle Schoolers' Career Exploration



Ohio Statewide

**Family Engagement Center**

—at The Ohio State University

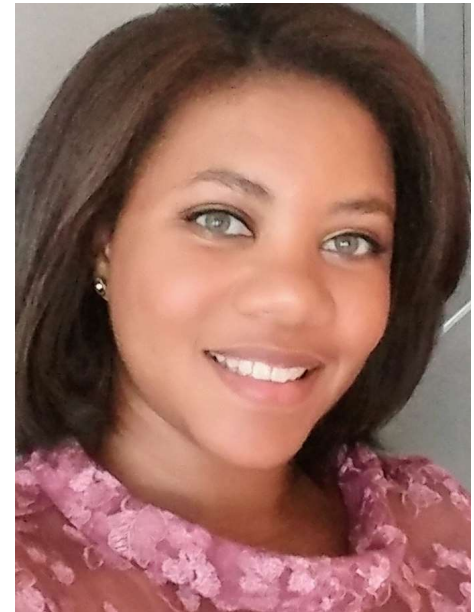
# About us



**Keli Bussell, Training and Development Specialist**  
Center on Education and Training for Employment



**Patrick Cunningham, Graduate Research Associate**  
Ohio Statewide Family Engagement Center  
Counselor Education

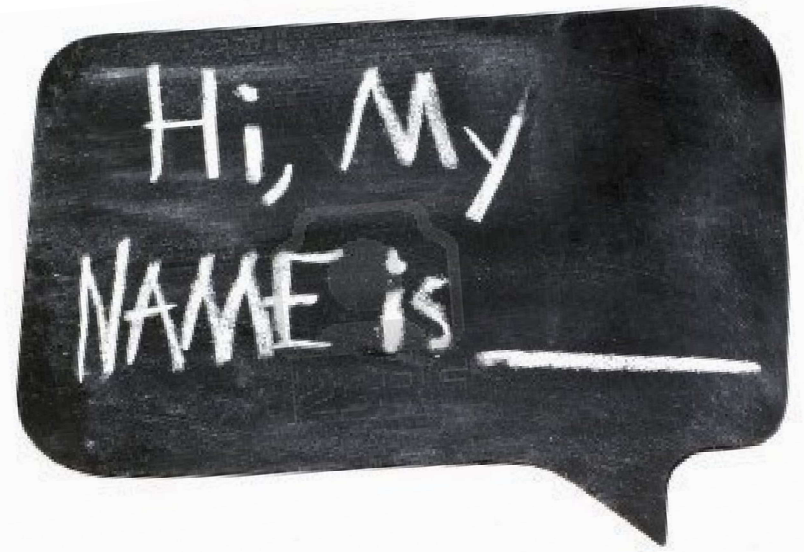


**Kayla Mack, Education Program Specialist**  
Office of Graduate Success  
Ohio Department of Education

# Introduction

Help us to learn more about who you are and where you are coming from! *In the chat...*

- Current role
- When you were in middle school, what did you want to be when you grew up?



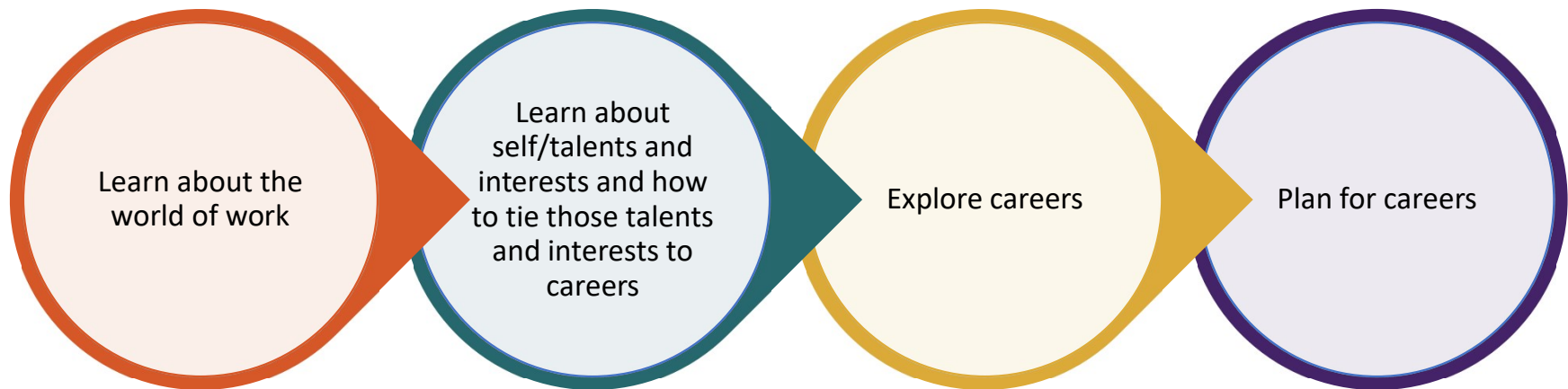
# Our Goals

- ✓ **To promote effective collaboration around career exploration between middle schools and families.**
  - ✓ By describing the importance of career exploration in middle school.
  - ✓ By describing the importance of family engagement in career exploration.
  - ✓ By discussing the roles of families, in partnership with schools, for career exploration in middle school.
  - ✓ By applying effective family engagement strategies to real situations.



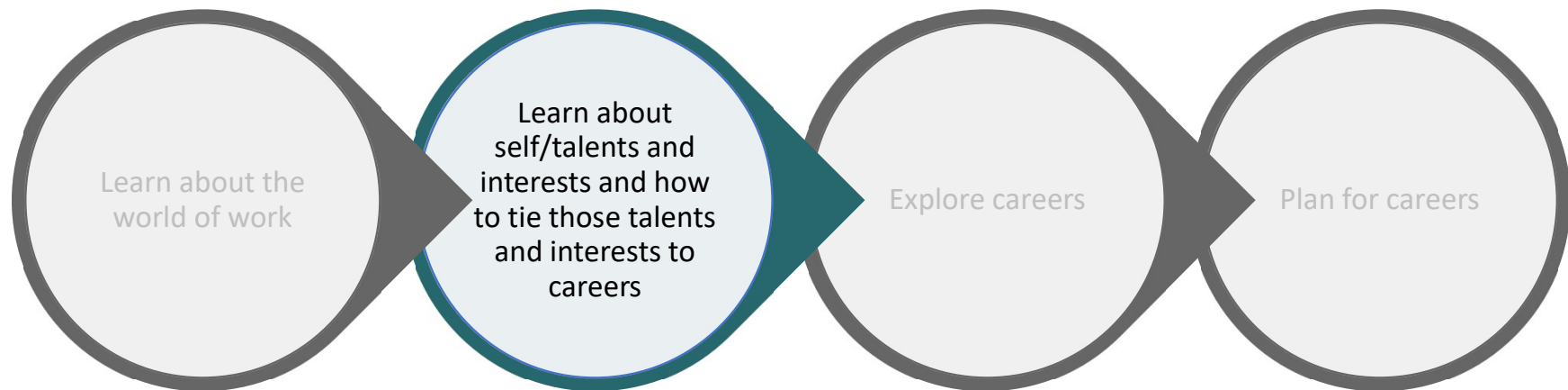
# Career Exploration in Middle School

Developmental process



# Career Exploration in Middle School

Middle school is a crucial time for career interventions and career-related activities and can have a significant and positive impact. <sup>1, 7, 13</sup>





# State Framework for Career Advising



Home > Career Tech > Career Connections

## QUICK LINKS

- » Business Advisory Councils
- » Career Advising Policy and Student Success Plan
- » Career Connections Framework
- » Career Pathways
- » In-Demand Jobs Week Toolkit
- » Lessons and Activities
- » Event and Training Resources
- » Promising Practices
- » Resources for Families and Communities
- » Resources for School Counselors
- » Resources for Teachers
- » Work-Based Learning



## Contact Information

CAREERCONNECTIONS@EDUCATION.OH IO.GOV

CASSANDRA PALSGROVE, DIRECTOR -  
OFFICE OF GRADUATE SUCCESS  
614-728-3690  
cassandra.palsgrove@education.ohio.gov

KAYLA MICKENS, PROGRAM  
SPECIALIST - OFFICE OF GRADUATE  
SUCCESS

Today, students need to see a link between what they are learning and future work. Career Connections offer practical ways for teachers and school counselors, families and community members to show students, as early as in kindergarten, the types of careers possible for them.

## VIEW COLLEGE AND CAREER READINESS DATA DASHBOARDS

 <b>Career Connections Framework</b> Help students develop a vision and realistic plan for their futures – during K-12 and beyond	 <b>Work-Based Learning</b> Connect business and education through authentic work experiences	 <b>OhioMeansJobs K-12</b> Access resources and training for teachers using this no-cost career planning system
 <b>Families and Communities</b> View tools to help your child make career connections	 <b>School Counselors</b> Resources, new counselor standards, and links to professional organizations	 <b>Teachers</b> Learning strategies, lesson activities, professional development and Student Success Resource Library
 <b>Business Advisory Councils</b> Foster cooperation among schools, businesses and communities	 <b>Advising Policy</b> Review career advising policies/student success plans that districts may use to inform local planning	 <b>Career Pathways</b> Link your interests to a future career





# Career Exploration in Middle School

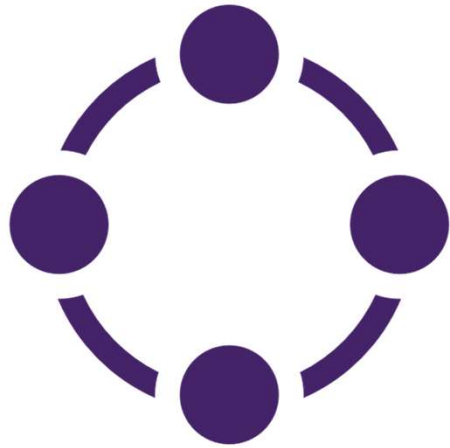


**Self-efficacy:** our perception of our own capabilities in reaching a given level of attainment, or of our ability to reach goals <sup>3</sup>

**Self-concept:** how we perceive ourselves, which changes over time throughout stages of life <sup>12</sup>



# Career Exploration in Middle School



**Limited exposure** within immediate surroundings and family expectations



# Career Exploration in Middle School



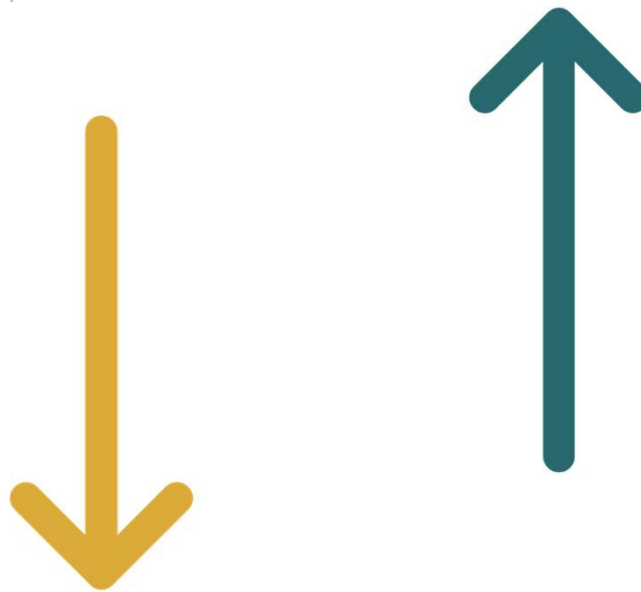
Interests

Aptitudes

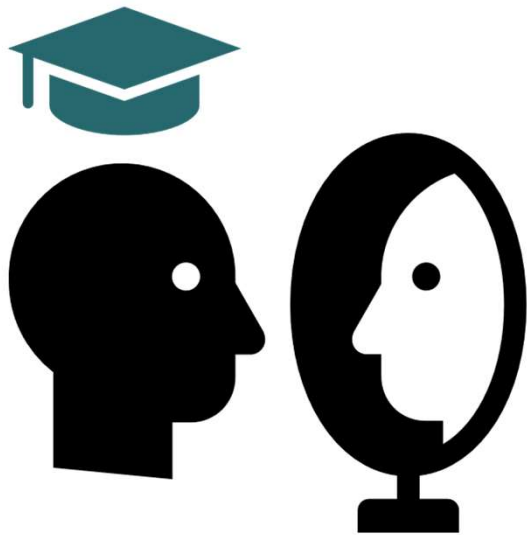


# Career Exploration in Middle School

Aptitudes<sup>4, 5, 6, 10, 11</sup>



# Career Exploration in Middle School



Increased understanding of **self** and tying to career interests



Increased **ability to make informed decisions** about academic planning



# Family Influence on Career Development

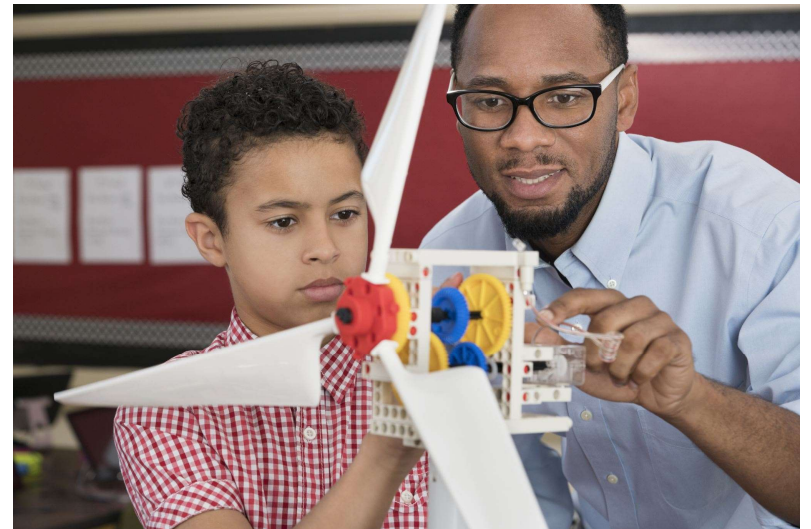


- Families are the primary career influence for children <sup>2, 9</sup>
- Families have expectations and beliefs that shape their child's development
  - Expectations influence conversations and behavior
  - Send messages directly and indirectly to the child
  - Lead to formation of career interests and beliefs about self and careers



# Family Engagement in Career Exploration

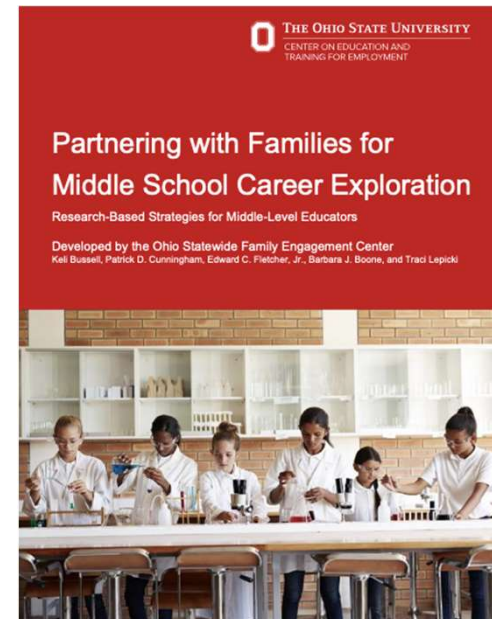
- Engagement in child's career development both at home and in school is influenced by:
  - Motivational beliefs
  - Perceptions of invitations for involvement from others
  - Life context <sup>8</sup>
- Partnerships between schools, families, and communities around career exploration are undervalued and underemphasized.





# Research Brief

- “Partnering with Families for Middle School Career Exploration”
- Applies Joyce Epstein’s framework for family engagement to the research on middle school career exploration to describe opportunities for partnerships between schools and families in this area



# What can schools do?

## Reminder:

Perkins V is approved for 5<sup>th</sup> grade and up!

Video Library



9. CTE in the Middle Grades

8:22



# What can schools do?

## Reminder:

Title 1 funding can be applied to family engagement in this area.

## Parent Engagement



### PROGRAM CONTACTS

**Hearcel Craig**

Parent Engagement Coordinator

(614) 387-2215

[Hearcel.Craig@education.ohio.gov](mailto:Hearcel.Craig@education.ohio.gov)

**Dr. Diane Neal**

Assistant Director

(614) 728-3483

[Diane.Neal@education.ohio.gov](mailto:Diane.Neal@education.ohio.gov)

As per the Elementary and Secondary Education Act, Title I, Part A Section 1118, a written parental involvement policy shall be developed jointly with, agreed upon with, and distributed to parents of participating children.



# Activity

- Quick overview of each strategy and opportunities in our Research Brief
- Jamboard!
  - Collaborate to generate ideas (current practices and future ideas), applying each strategy to the individual family level, the school-wide level, and the community level.
- We will share an opportunity to receive the content from the Jamboards and additional resources at the end of the session.



# Strategy #1:

## Value families' role in career development

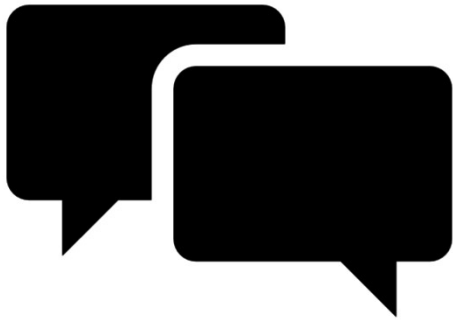


### OPPORTUNITIES SCHOOLS CAN USE:

- Support families' understanding of the important role they play.
- Provide families with discussion topics to have at home.
- Encourage families to support students' career exploration at home.
- Help expose families to careers with tools and resources.



## Strategy #2: View families as collaborative communicators



### OPPORTUNITIES SCHOOLS CAN USE:

- Ask families for their feedback regarding career-related communication and practices from the school.
- Share information about software and surveys used and other related resources and how they can be involved.
- Highlight and share with families who the career contact is at the school.
- Create toolkits and resources for families to make information readily accessible.



## Strategy #3: Build partnerships with families through volunteering



### OPPORTUNITIES SCHOOL PERSONNEL CAN USE:

- Survey families to find out how they would like to be involved in career-related activities with the school.
- Request families provide job shadowing opportunities.
- Invite families to teach employability skills and/or technical skills within their areas of expertise.
- Solicit families to be career mentors to students.
- Invite families to virtual and in-person events to learn more about the courses available to their student and how courses help prepare them for future careers.





## Strategy #4: Encourage families' career-related learning at home



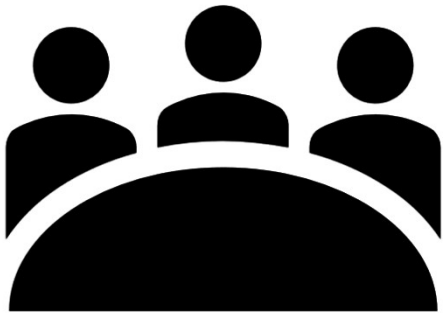
### OPPORTUNITIES SCHOOL PERSONNEL CAN USE:

- Express the importance of family engagement in the career exploration.
- Share with families about career-related activities that are taking place in school and provide information on follow-up activities or conversations to have at home.
- Send home guides for how to help students interpret career- and self-assessments.
- Refer families to the Ohio Department of Education, Career Connection's website to explore career pathways.



# Strategy #5:

## Collaborate with families as decision makers for career-related planning and curriculum



### OPPORTUNITIES SCHOOL PERSONNEL CAN USE:

- Recruit families to participate in the planning of career-related programming inside and outside of school.
- Establish a standing schedule for meeting with families on career-related topics.
- Solicit feedback from families regarding the effectiveness of current career exploration practices.
- Ensure meetings for course selection are conducted in a way that families can access.



## Strategy #6: Collaborate with the community

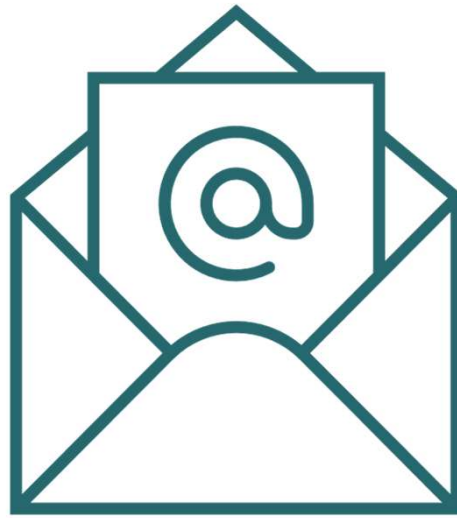


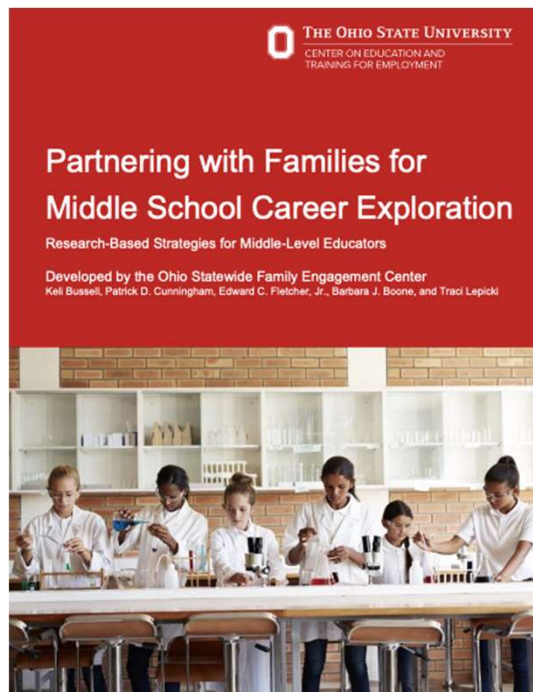
### OPPORTUNITIES SCHOOL PERSONNEL CAN USE:

- Invite businesses to make school visits, to offer job shadowing experiences or summer skill camps.
- Invite area career and technical educators to connect with students through field trips so that students can see onsite labs, learn about organizations hiring from their programs and learn of potential pre-apprenticeships or internships and how to prepare for them.
- Connect families with other families and with after school programs that offer career-related experiences.



# Put your email in the chat!





# Middle Years to Careers

<https://ohiofamiliesengage.osu.edu/middle-years-to-careers/>

<https://ohiofamiliesengage.osu.edu/newsletters/>



# References

1. Akos, P., Konold, T., & Niles, S.G. (2004). A career readiness typology and typical membership in middle school. *The Career Development Quarterly*, 53(1), pp. 53-66. <https://doi.org/10.1002/j.2161-0045.2004.tb00655.x>
2. American Student Assistant (2019). Understanding middle school and high school students' attitudes toward future planning. White Paper.
3. Bandura, A. (1977). Self-efficacy: toward a unifying theory of behavioral change. *Psychological Review*, 84(2), 191-215.
4. Dunning, D., Heath, C., & Suls, J. (2004). Flawed Self-Assessment Implications for Health, Education, and the Workplace. *Psychological Science in the Public Interest*, 5, 69-106. <https://doi.org/10.1111/j.1529-1006.2004.00018>
5. Ehrlinger, J., Johnson, K., Banner, M., Dunning, D., & Kruger, J. (2008). Why the unskilled are unaware: Further explorations of (absent) self-insight among the incompetent. *Organizational Behavior and Human Decision Processes*, 105(1), 98-121. <https://doi.org/10.1016/j.obhdp.2007.05.002>
6. Feller, R.W. & Leard, J. (2017-2018). YouScience aptitude assessment moves career science beyond self-report interests. *Career Development Network Journal*, 33(4), 22-32
7. Hartung, P. J., Porfeli, E. J., & Vondracek, F. W. (2005). Child vocational development: A review and reconsideration. *Journal of Vocational Behavior*, 66, pp 385-419. <https://doi.org/10.1016/j.jvb.2004.05.006>
8. Hoover-Dempsey, K., Walker, J., & Sandler, H. (2005). 'Parents' motivation for involvement in their children's education' in E. Patrikakou, R. Weissberg, S. Redding, & H. Walberg (Eds.), *School-family partnerships for children's success* (pp.40-56). New York, NY: Teachers College Press.
9. Keller, B. K., & Whiston, S. C. (2008). The role of parental influences on young adolescents' career development. *Journal of Career Assessment*, 16(2), 198-217. <https://doi.org/10.1177/1069072707313206>
10. Metz, A.J. & Jones, J.E., (2013). 'Ability and Aptitude Assessment in Career Counseling' in Brown, S. & Lent, B. (Ed.). *Career Development and Counseling: Putting Theory and Research to Work* (2nd Edition, Chapter 16, pp 449-476). Hoboken, New Jersey: John Wiley & Sons.
11. Stone, J., & Lewis, M. (2012). *College and career ready in the 21st century: Making high school matter*. New York, NY: Teachers College Press.
12. Super, D.E. (1957). *The psychology of careers*. New York: Harper & Row.
13. Whiston, S. C., J. Rossier, Hernandez Barón, J.P.M. (2017). 'Evidence-Based Practice in Career and Workforce Development Interventions', in Solberg, V.S.H. & Ali, S.R. (ed.). *Handbook of Career and Workforce Development, Research, Practice, and Policy*. London: Routledge, pp 39-56. <https://doi.org/10.4324/9781315714769>





# Questions?

Unmute and ask!  
Or put in the chat.





THANK YOU FOR WATCHING!

[OhioFamiliesEngage.osu.edu](https://OhioFamiliesEngage.osu.edu)



Ohio Statewide  
**Family  
Engagement  
Center**

—at The Ohio State University—



Ohio Statewide Family  
Engagement Center



[OhioSFEC@osu.edu](mailto:OhioSFEC@osu.edu)



[@OhioEngage](https://twitter.com/OhioEngage)



[@OhioEngage](https://www.instagram.com/OhioEngage)

Bussell, K., Cunningham, P. D., & Mack, K. (2021, September 17) *Family Engagement in Middle Schoolers' Career Exploration*. [PowerPoint slides].