



# Family and Community Engagement Network

---

DECEMBER 16, 2020

**zoom**



# Greetings

---

PLEASE ADD YOUR NAME AND  
REGION TO THE CHAT BOX.

# Today's Agenda

---

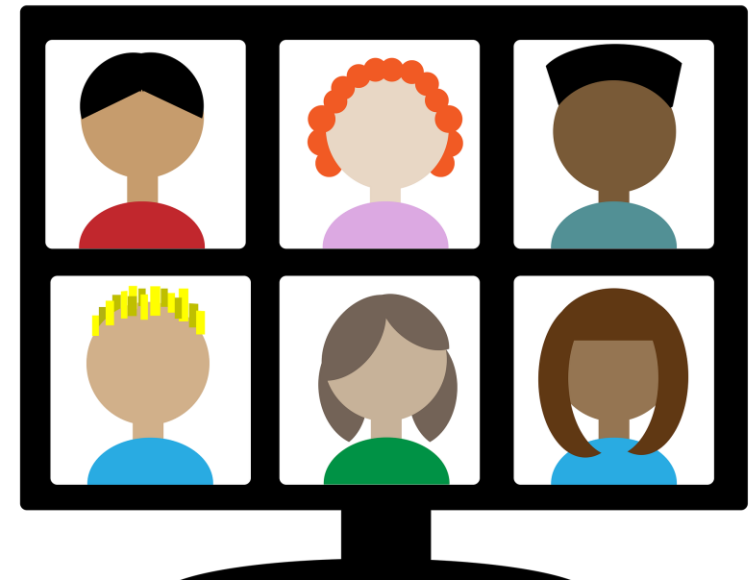
1. Welcome
2. Partner Updates
3. Updates from the Ohio Statewide Family Engagement Center
4. Professional Development Session: *Race, Education, and Family Engagement*, Dr. Kenyona Walker
5. Adjourn

# Catching Up

---

*Share a success you or a school/district that you work with has had engaging in healthy communication on teams with families.*

*As we approach the new year, what is an adjustment that you will make in your work?*



# SPECIAL EDUCATION



LYNDSAY HAVEY, OFFICE FOR EXCEPTIONAL CHILDREN

---





# Family and Community Outreach Center

JEN BAVRY

---



# Ohio Statewide Family Engagement Center Updates



---

HADLEY BACHMAN & BETH CRAWFORD





### Healthy Communication on Teams with Families: A Reflection Tool

**Overview:** This tool is designed for coaches, school and district leaders, and their leadership teams. Its purpose is to help with analyzing communication patterns on teams that include families. The tool will guide you through criteria for healthy communication and direct you to align data and evidence to support your perceptions. This reflection tool will help provide perspective for current communication practices on your team and areas for growth in improved collaboration.

**Directions:** For each item on the reflection tool, rate your team's current level of practice. Provide evidence and considerations for next steps.

Level of Practice	Description
Not evident	1 Our practices do not reflect this communication principle yet.
Emergent	2 We try to do this. Our practices inconsistently reflect this communication principle.
Rising	3 Our practices usually reflect this communication principle, but we have room for growth.
Exemplary	4 Our practices reflect this communication principle with fidelity in each of our meetings.

Communication Principles	Rating	Evidence	Considerations and Next Steps
<b>Sense of Purpose:</b> All members of the team have a shared sense of purpose for successful outcomes for students. Each member of the team is valued for the unique skills and perspective they share. Roles of team members are clear.			
<b>Patterns of Participation:</b> Protocols for participation are consistently honored to ensure balance between members. Communication is a multi-directional exchange of ideas.			
<b>Equity and Inclusion:</b> The team represents a balance of members of the school community. A range of different backgrounds and experiences are "at the table." Inclusive language (such as "we" and "us") is the norm. The team clarifies acronyms and jargon to ensure that families can fully participate in the conversation.			
<b>Conflict and Decisions:</b> Members of the team collaborate in a respectful and cordial exchange of ideas, even when members disagree. Decision-making processes are clear and consistently followed.			
<b>Mood and Tone:</b> The mood during team communication is authentic, engaged, and relaxed. The tone of conversations is respectful, calm, and friendly.			
<b>Physical/Virtual Space:</b> The space for the meeting, whether virtual or in-person, creates a sense of belonging. Participants are comfortable, open, and welcoming. The space is accessible for all members.			

This guide was created by The Ohio Family and Community Engagement Network, led by the Ohio Statewide Family Engagement Center.

# Healthy Communication on Teams with Families: A Reflection Tool

HADLEY BACHMAN





## Indicator 8 Survey



# Break

---

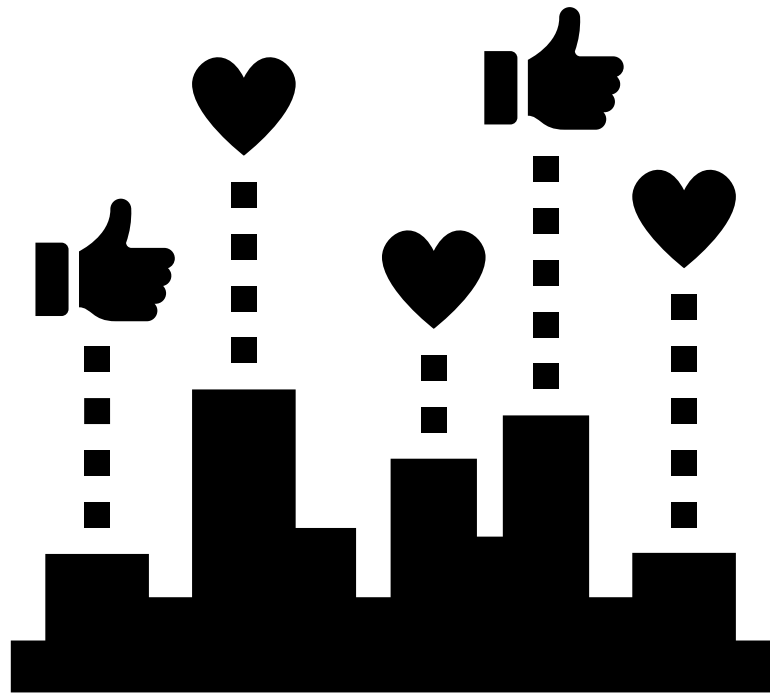
5-MINUTES



# *Race, Education, and Family Engagement*

---

DR. KENYONA WALKER



# We Would Like to Hear From You!

---

Please follow the link below to share your feedback on today's meeting.

[bit.ly/37OkLre](https://bit.ly/37OkLre)

# Thanks for a great meeting!

---

January 13, 2020 via   
Featuring Hadley Bachman