



National Network of Partnership Schools: Ohio

District Leader Training
September 22 & 23, 2020



THE OHIO STATE UNIVERSITY

CENTER ON EDUCATION AND
TRAINING FOR EMPLOYMENT

Barbara Boone, Ph.D.

Director, Ohio Statewide Family
Engagement Center



Joyce L. Epstein, Ph.D.

Director,
National Network of Partnership Schools
Professor of Education and Sociology
at Johns Hopkins University.



Getting Started

- Please rename yourself with your name and district or SST
- Use the Chat for questions.
- Please mute your mic and turn off your video.
- This session will be recorded and made available to you after today.
- Locate the activity materials for today on the OSU website.

We are...

- A national leader in the field of family, school, and community engagement.
- Located at the Center on Education and Training for Employment, a translational research center within the College of Education and Human Ecology.
- Our goal is to bring research to action by providing schools, families, and community partners with the tools they need to work together so all children have success in learning and life.



THE OHIO STATE UNIVERSITY

CENTER ON EDUCATION AND
TRAINING FOR EMPLOYMENT

Where to find Ohio's NNPS Resources



The screenshot shows the Ohio Statewide Family Engagement Center website. The header features a logo with four stylized figures in red, orange, yellow, and green forming a circle. To the right of the logo, the text reads "Ohio Statewide Family Engagement Center" in a large, bold, purple font, followed by the tagline "Every Child. Every Family. Every School" in a smaller, purple font. Below the header is a navigation bar with links: Home, For Families, For Schools, What is Family Engagement?, Training, Our Networks, and About Us. A search icon is also present.

OHIO NNPS NETWORK

**Ohio Statewide Family Engagement Center
National Network of Partnership Schools Sites**

Cohort 1 Districts

- Toledo Public Schools
- Oberlin City Schools
- Cleveland Hts. – University Hts. City Schools
- Wickliffe City Schools
- Sebring Local Schools
- Sidney City Schools
- Mansfield City Schools
- Alliance City Schools
- Trotwood – Madison City Schools
- Columbus City Schools
- Franklin Local Schools
- North College Hill City Schools
- Greenfield Exempted Village Schools
- Adena Local Schools
- Alexander Local Schools
- Brunswick City Schools

Cohort 2 Districts

- Bowling Green Independent Schools
- Wellington Exempted Village Schools
- Shaker Heights City Schools
- Fairport Harbor Exempted Village Schools
- Leetonia Exempted Village Schools
- Kenton City Schools
- Ashland City Schools
- Sandy Valley Local Schools
- Piqua City Schools
- Union Local Schools
- Clermont Northeastern Schools
- South Point Local Schools
- Adams Co. Ohio Valley Schools

<https://ohiofamiliesengage.osu.edu/ohio-nnps-network/>

Agenda

1. Welcome and Get Ready
2. District Leaders Workshop On School, Family, And Community Partnerships , *Dr. Joyce Epstein*
3. Next steps for your district and schools, *Dr. Barbara Boone*
4. Q&A



Objectives

1. Explore the NNPS Model and the role of district leadership.
2. Set priorities for guiding your district's school teams in implementing the NNPS Model.
3. Prepare for the training of school teams next week.
4. Access the supports of the OSU Statewide Family Engagement Center and NNPS
5. Orient your district as a member of a community of Ohio districts who will share expertise and expand the NNPS model to ready schools.



NATIONAL NETWORK OF

Partnership Schools

JOHNS HOPKINS UNIVERSITY

**DISTRICT LEADERS WORKSHOP
ON SCHOOL, FAMILY, AND COMMUNITY
PARTNERSHIPS**

September 2020

**Ohio State Family Engagement Center (OhSFEC)
ZOOM Meeting**

Facilitators

**Dr. Joyce L. Epstein, Director, NNPS
Dr. Barbara J. Boone, Director, OhSFEC**

District Leaders Workshop

TODAY, we will focus on YOUR LEADERSHIP on School, Family, and Community Partnerships.

At the end of this training, you will be able to:

- **Describe the roles and responsibilities of leaders for partnerships at the district level.**
- **Select strategies for effective leadership and facilitation on partnerships for YOUR location.**
- **Draft YOUR Leadership Plan for Partnerships for the 20-21 school year.**
Provide your plan to your SST Coach.
- **Identify NNPS resources to help you with your work.**

NEXT WEEK, we will prepare your schools' to strengthen their programs with the NNPS One-Day Team Training Workshop.

YOU are your district's expert on partnerships, and must know how your schools can use research-based structures and processes to ensure effective and equitable programs of family and community engagement.

The research base—

Why is it important to have LEADERS for Partnership Program Development?

Research shows that:

When district leaders provide training and facilitation to schools' Action Teams for Partnerships, their schools:

- **Have higher quality partnership programs.**
- **Address more challenges to involve all families, including those who are typically “hard to reach.”**

Part 1.

Roles and Responsibilities

Leaders for Partnerships



Richland School District One, 2019
Richland, SC



What's in a name?

A DISTRICT FACILITATOR FOR PARTNERSHIPS and KEY CONTACT to NNPS

A DISTRICT Facilitator for Partnerships and Key Contact to NNPS is **a specialist who will lead the agenda for partnership program development in their location, and**

directly facilitate schools to help them strengthen their school-based programs and practices of family and community engagement.

NOTE: Regional SST Coaches will facilitate DISTRICT leaders' work and progress.

District Leaders for Partnerships Have **TWO** Major Responsibilities

**1. Conduct Leadership-Level Activities
on Family and Community Engagement**

**2. FACILITATE schools' Action Teams
for Partnerships (ATPs)**

**PARTNERSHIP
PROGRAM
GOALS**



Pasco School District, 2019

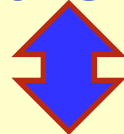
Pasco, Washington

**How does “NESTED” Leadership
Promote Successful Partnership Programs?
WHOSE RESPONSIBILITY IS IT?**

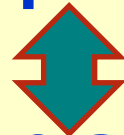
**REGIONAL SST Coaches
for Family and Community Engagement**



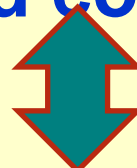
District Leaders for Partnerships



School-based programs of partnership



**Improve and increase
goal-linked involvement of all parents
and selected community partners**



More successful students.

District Leadership-Level Activities

- ☐ Review and discuss the district's official **policy** on family involvement
- ☐ Conduct **staff development** on partnerships
- ☐ Conduct **workshops for parents**
- ☐ Make other **presentations** on partnerships
- ☐ Update partnership information on your **website**
- ☐ Coordinate an **Advisory Council** on family and community engagement
- ☐ **Collect and share best practices** for schools
- ☐ Conduct **OTHER** leadership activities on partnerships
(Share **YOUR** examples)

Recommended Activities to Facilitate School ATPs

- ❑ Conduct the NNPS **One-Day Workshop** for Action Teams for Partnerships (ATPs).
- ❑ Make **monthly or weekly contact** with school ATPs.
- ❑ Hold **quarterly cluster meetings** for ATP Chairs.
- ❑ Schedule an annual **meeting with each principal**.
- ❑ Convene **end-of-year celebrations** for ATPs to share best practices, discuss challenges, and write next plans.
- ❑ Guide ATPs to **evaluate** programs and progress.
- ❑ **Facilitate schools** in **OTHER ways** to help them improve their partnership programs. (**YOUR examples**)

Activity 1 A and 1 B

With Your ZOOM partners:

- 1. Check list: Quickly check the boxes in Activity 1 A and 1 B to show:**

Which activity do you do NOW? Mark with a ✓

Which activity would you like to do? Mark with a ?

What other activities do you conduct NOW as a district leader for partnerships?

- 2. In the time remaining, discuss activities on 1A and 1B that you aim to improve as the OhSFEC project proceeds.**



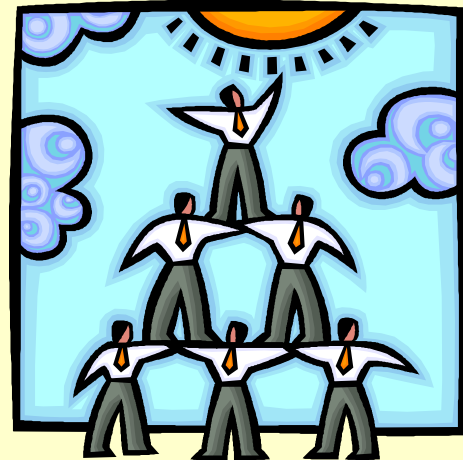
NNPS Expectations for Leaders for Partnerships

- **One FTE Facilitator** can guide 20-30 school-based Action Teams for Partnerships (ATPs).
Part-time Facilitators work with a proportional number of school ATPs.
- Write and implement an annual **Leadership Plan for Partnerships**.
- Have a **budget** for staff (salaries and benefits) and program activities.
- **EVALUATE** the quality and progress of partnership programs each year. NNPS helps you conduct annual evaluations—a unique member-benefit.

Administrative Support

Leaders for Partnership do more and better with support from:

- Superintendent
- Other Administrators
- School Board
- Official Policy
- Building Principals
- Others?



Collegial Support

Leaders for Partnership do more and better with INTERDEPARTMENTAL support from:



- Title I – Federal Programs
- Curriculum & Instruction
- ESOL/Bilingual
- Special Education
- Social Work/School Psychology
- Student Services
- Research/Evaluation
- Business Roundtable
- Other Departments
or Programs?

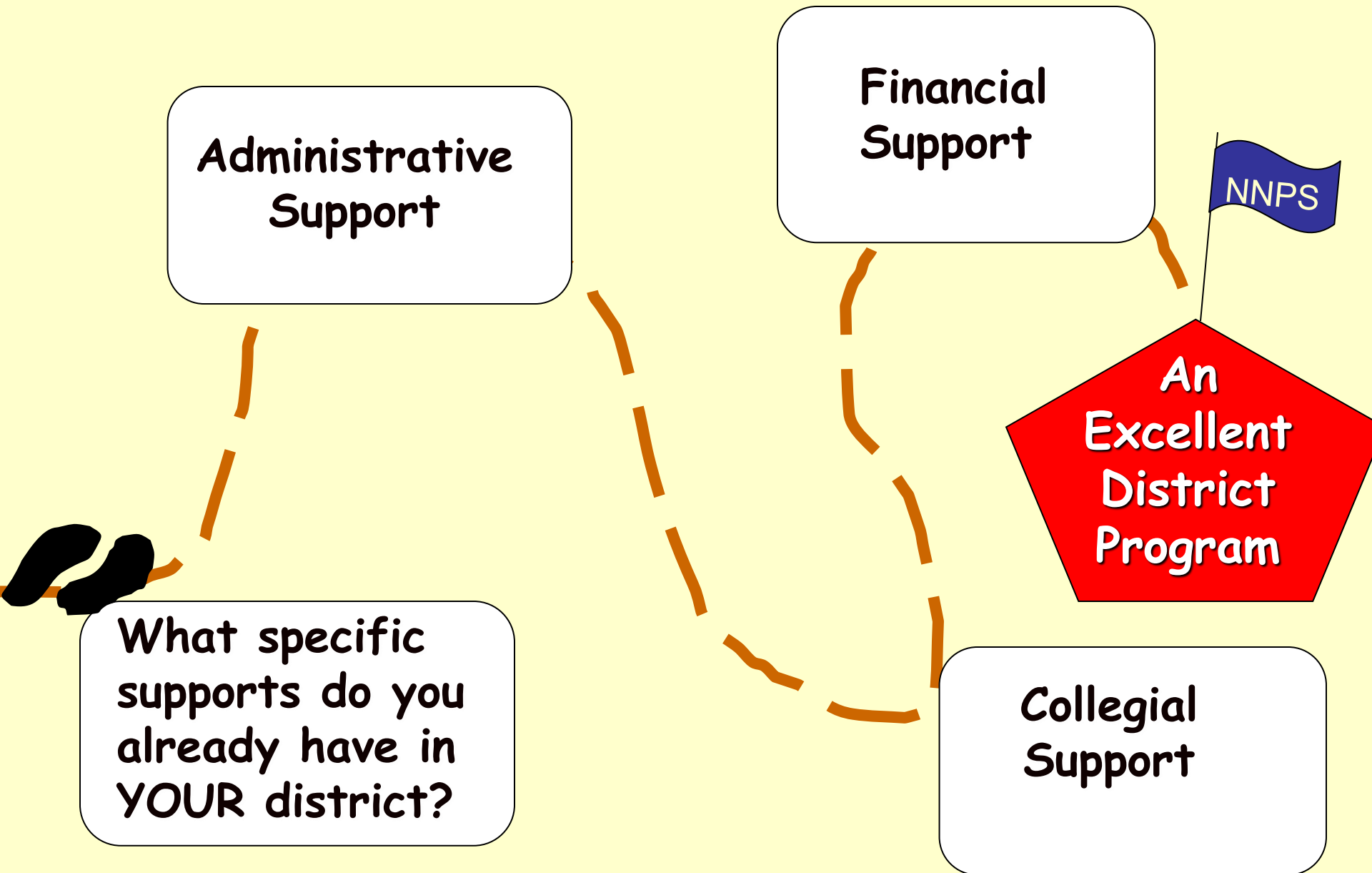
MAJOR SOURCES OF FUNDS for Partnership Programs

- **Title I and other “Titles” [II, III, IV, V, IX]**
- **Curriculum and Instruction**
- **Bilingual Education**
- **Special Education**
- **General Funds**
- **State Programs and Grants**
- **Superintendents’ and Principals’
Discretionary Funds**
- **Foundation Grants**
- **More Ideas—see NNPS *Handbook*, Chapter 7**



In ESSA: Title I-Basic Programs; Title II-PD-Training Teachers/Principals; Title III-ELL
Title IV-21st Century Schools; Title V-Innovation/Local Flexibility; Title IX-Homeless +

Path to An Excellent District Partnership Program





10 Minute Break

PART 2.

LEADERSHIP and FACILITATION STRATEGIES

for School, Family, and Community Partnerships



**National Parent Council Primary
Partnership Schools Ireland, 2020**
Dublin, Ireland



Saginaw School District, 2018
Saginaw, MI

Leadership & Facilitation Strategies

- **Create awareness**

Actively promote your partnership program with key stakeholders. Share your own and NNPS websites to show that you are using research-based approaches.

- **Align program & policy**

Show how official policies, priorities, “pillars” and Strategic Plans are supported by your leadership and programs of partnerships.

Help schools link partnership practices to school goals for student achievement and behavior, and to the school climate for good partnerships.

- **Guide learning & program development**

Conduct the NNPS One-Day Team Training Workshops for schools’ ATPs. Conduct “refreshers,” and other professional development activities on partnerships.

Leadership & Facilitation Strategies

continued

- **Share knowledge**

Communicate on a regular schedule with SCHOOL ATP chairpersons to increase knowledge about effective partnership programs.

Collect best practices and network with others—locally, nationally, and internationally.

- **Celebrate milestones**

Recognize progress and excellence.

- **Document progress & evaluate outcomes**

Evaluate teamwork, program quality, and progress.
Keep records of plans, activities, and evaluations.
Work with NNPS to conduct annual evaluations.

LEADERSHIP AND FACILITATION STRATEGIES

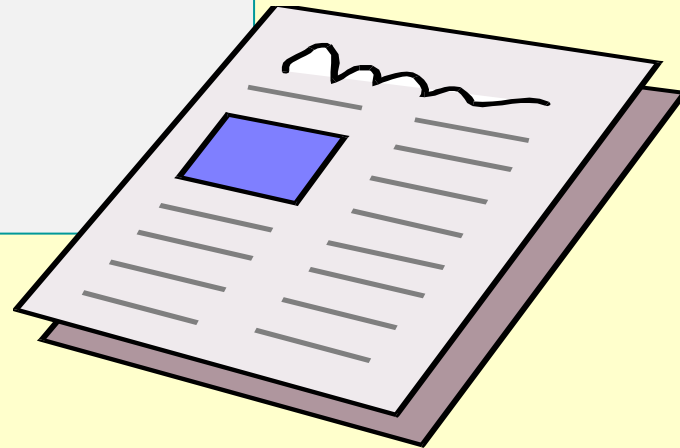
Create Awareness

Actively promote your partnership program to key stakeholders.

NEWS You Can Use – E-forms

Bridgeport School District
Bridgeport, Connecticut

Promising Partnership Practices, 2016



See more examples of district leadership and facilitation in NNPS's books of *Promising Partnership Practices*, www.partnershipschools.org, in *Success Stories*.

Align Program and Policy

We Are a STEM Family

**Pasco School District
Pasco, Washington**



Science



Technology



Engineering



Mathematics

Promising Partnership Practices, 2016

Guide Learning and Program Development

Conduct One-Day Team Training Workshops for schools' ATPs and on-going professional development with school teams.

ESSENTIAL One-Day Team-Training Workshop
for School-based Partnership Teams

Conducted by District Leaders

Your Handbook for Action 4th edition, 2019



Share Knowledge

*Communicate with school teams on a regular schedule.
Conduct well-planned meetings to discuss successful
activities, challenges to solve, and new knowledge.
Network with others locally and nationally.*

Cluster Busters: Keep Teams Engaged

Saginaw Public School District, MI

Promising Partnership Practices. 2017



LEADERSHIP AND FACILITATION STRATEGY

Celebrate Milestones

Recognize progress and excellence.



YOUR BOOK of *Promising Partnership Practices*

Many districts and organizations in NNPS create a collection.

Glow and Grow: An End-of-Year Celebration **Middletown Public Schools, CT**

Promising Partnership Practices, 2009



LEADERSHIP AND FACILITATION STRATEGY

Document Progress and Evaluate Outcomes

Evaluate teamwork, family and community involvement activities, quality of district and school programs. Assess progress on YOUR office's leadership for partnerships.



Evaluate:

Guide schools to use: *Annual Evaluation of Activities*
(chapter 9 in *Handbook*)

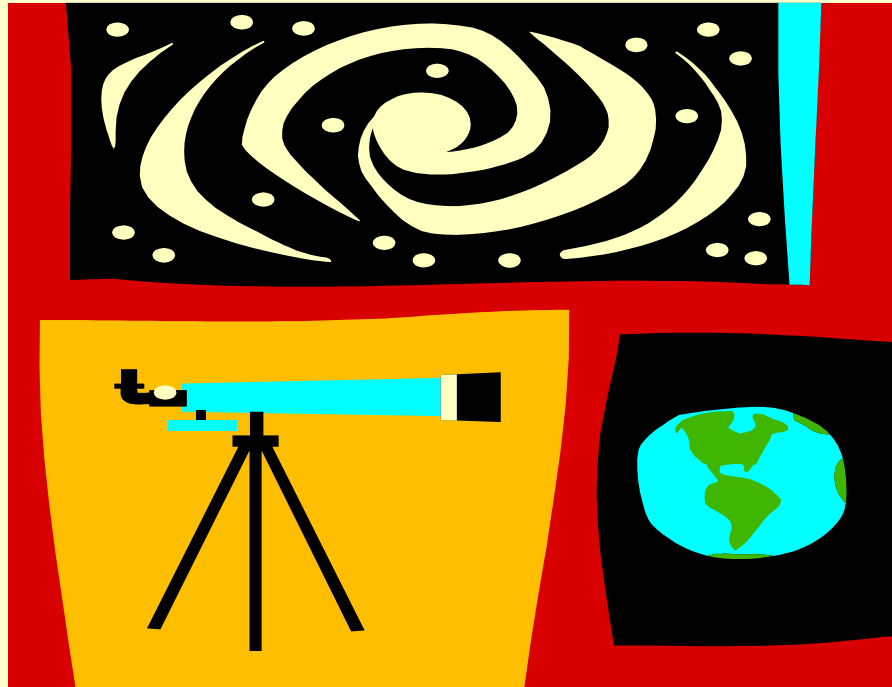
NNPS will conduct: Annual *UPDATE* surveys
to renew membership

An Excellent Program of Partnership

will work at the leadership level
and with all school ATPs to . . .



Explore Leadership Plans



Partner ZOOM Activity 2

Explore Leadership and Facilitation Strategies

1. Consider YOUR district and schools in the OhSFEC project.
2. On the *Lead and Succeed Inventory*, see the **MOST ESSENTIAL LIST** of activities for the 20-21 school year. You cannot do them all at once. Which ones will help you strengthen leadership and guide YOUR schools to implement effective and equitable partnership programs.
3. With your ZOOM partner, agree on the activities you want to conduct this year.
 - * Look over the list of leadership and facilitation strategies.
 - * Check ✓ at least ONE activity for each strategy.
 - * Select NO MORE THAN 14 activities TOTAL.

You will have about **20 minutes** to come to a consensus on a proposed plan.

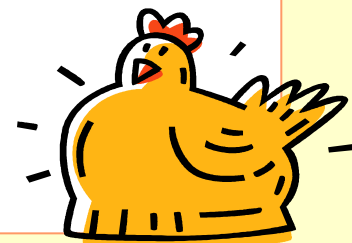
“Pluck”



ONE Important Activity to Explain

Which activity did you and your ZOOM partner think is most important and why?

- 1: Create awareness**
- 2: Align program and policy**
- 3: Guide learning and
program development**
- 4: Share knowledge**
- 5: Celebrate milestones**
- 6: Document progress &
evaluate outcomes**





DISTRICT DRAFT YOUR 2020-21 LEADERSHIP PLAN FOR PARTNERSHIPS


Activity 4 Handout

Page 1: Leadership Activities (Your Office)

**Page 2: Facilitate Your Schools'
Action Teams for Partnerships**

- * Check your ZOOM selection of essential activities.**
- * See the full *Lead and Succeed Inventory***
- * See *What DO Facilitators DO?***

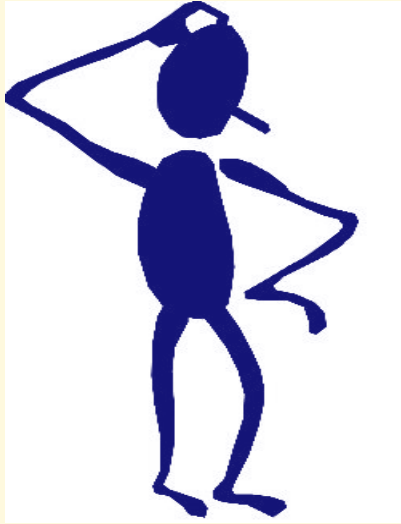
LEADERSHIP PLAN FOR SCHOOL, FAMILY, AND COMMUNITY PARTNERSHIPS

LOCATION: 		LEADER for PARTNERSHIPS/NNPS "KEY CONTACT"		SCHOOL YEAR:	
GOAL for Partnership Activities: <u>CONDUCT LEADERSHIP ACTIVITIES</u> on school, family, and community partnerships (YOUR position/YOUR office)					BUDGET FOR THIS GOAL
LEADERSHIP & FACILITATION STRATEGIES: CHECK THE OBJECTIVES THAT ARE ADDRESSED BY THE PLANNED ACTIVITIES					
<input type="checkbox"/> Create Awareness		<input type="checkbox"/> Align Program and Policy		<input type="checkbox"/> Guide Learning and Program Development	
<input type="checkbox"/> Share Knowledge		<input type="checkbox"/> Celebrate Milestones		<input type="checkbox"/> Document Progress and Evaluate Outcomes	
ACTIVITIES and STRATEGIES	EXPECTED RESULTS	TIME LINE/ DATES	PERSON(S) RESPON- SIBLE	COSTS SOURCES OF FUNDS, AND RESOURCES	EVALUATION TOOLS
	ALSO SEE PAGE 2 – DISTRICT ACTIVITIES to FACILITATE SCHOOLS or STATE ACTIVITIES to FACILITATE DISTRICTS 				

LEADERSHIP PLAN FOR SCHOOL, FAMILY, AND COMMUNITY PARTNERSHIPS

LOCATION: 		LEADER for PARTNERSHIPS/NNPS "KEY CONTACT"			SCHOOL YEAR:
GOAL for Partnership Activities: <u>FACILITATE SCHOOLS' ATPs</u> on school, family, and community partnerships (DISTRICTS guide school ATPs)					BUDGET FOR THIS GOAL
LEADERSHIP & FACILITATION STRATEGIES: CHECK THE OBJECTIVES THAT ARE ADDRESSED BY THE PLANNED ACTIVITIES					
<input type="checkbox"/> Create Awareness		<input type="checkbox"/> Align Program and Policy		<input type="checkbox"/> Guide Learning and Program Development	
<input type="checkbox"/> Share Knowledge		<input type="checkbox"/> Celebrate Milestones		<input type="checkbox"/> Document Progress and Evaluate Outcomes	
ACTIVITIES and STRATEGIES	EXPECTED RESULTS	TIME LINE/ DATES	PERSON(S) RESPONSIBLE	COSTS SOURCES OF FUNDS, AND RESOURCES	EVALUATION TOOLS
The planned activities help fulfill:					
<input type="checkbox"/> DISTRICT Policies		<input type="checkbox"/> ESSA Section 1116		<input type="checkbox"/> NNPS Expectations for Award Winners	
<input type="checkbox"/> ORGANIZATION Policies		<input type="checkbox"/> Other Title I Requirements		<input type="checkbox"/> Other (list) _____	
<input type="checkbox"/> STATE Policies					
National Network of Partnership Schools, Johns Hopkins University, 2019					

Use the CONTINUATION PAGES to list more activities!



Activity 3.

Think Quick!

COMMON CHALLENGES FACED BY FACILITATORS

WHAT WOULD **YOU** DO??

Here are 9 common challenges that district facilitators have faced.

Think Quick!

How would you solve this challenge?

Volunteer to share an idea using the CHAT box.

FOLLOW UP

How can NNPS help **YOU Lead and Succeed?**

- **Share the NNPS website as a useful resource:
www.partnershipschools.org**
- **Participate in quarterly calls from an NNPS Facilitator.**
- **Read NNPS monthly *E-Briefs* and occasional *E-Alerts*.
Check that NNPS e-mail is approved by IT for delivery.**
- **Call or e-mail an NNPS facilitator, coordinator, or researcher at any time.**

What Does NNPS Ask of District Leaders and Their Schools?

- **Use the NNPS approaches.**
Implement research-based structures and processes.

Tailor practices to fit YOUR local needs and goals.
- **Participate actively.** Write annual plans for partnerships, **implement** activities, **evaluate** activities, return UPDATE, **submit** *Promising Partnership Practices*, and **aim** for NNPS Partnership Awards.
- **EVALUATE progress** on the NNPS annual, end-of-year UPDATE survey. Renew membership (\$250) each year to continue benefits and services.

Let's Check the Goals of This Leadership Institute: **YES or NO?**

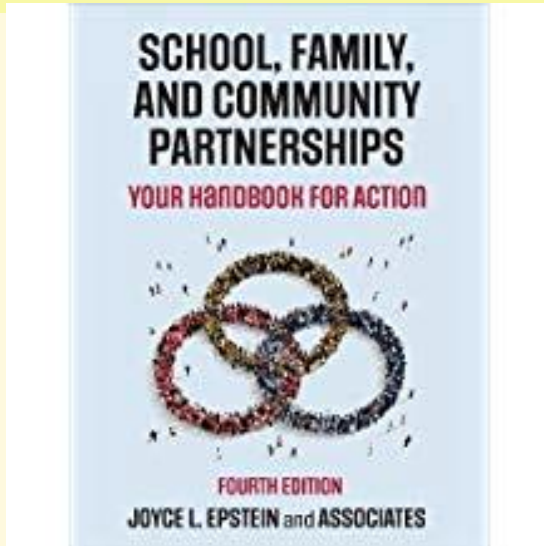
Are you able to. . .

- ✓ **Explain the NNPS model?**
- ✓ **Describe the roles and responsibilities of a District Facilitator for Partnerships?**
- ✓ **Select strategies for effective leadership and facilitation on partnerships for your location?**
- ✓ **(Next Step) Draft your Leadership Plan for 20-21?**
- ✓ **Identify NNPS resources to help you with your work?**

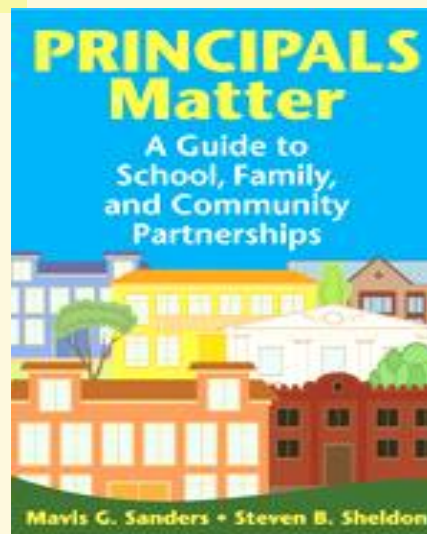
NEXT WEEK, you will learn to conduct the NNPS One-Day Team Training Workshop. You can, then, conduct the workshop with new team members, or with additional schools in YOUR district.

NNPS PUBLICATIONS

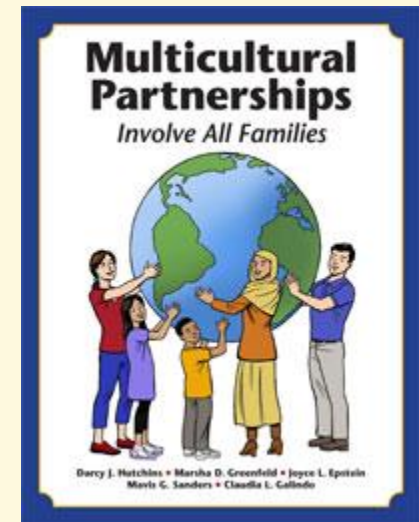
From Corwin Press
4th Edition and CD 2019



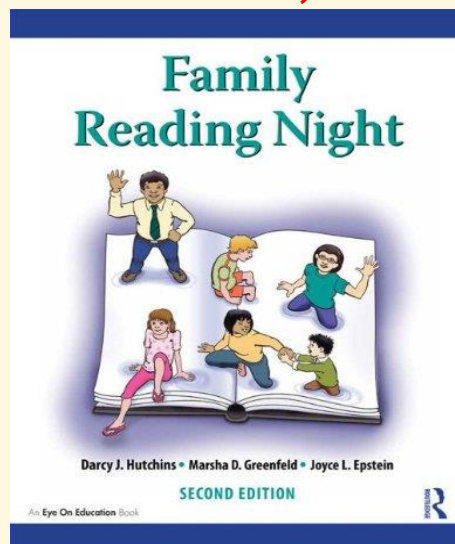
From Corwin Press
2009



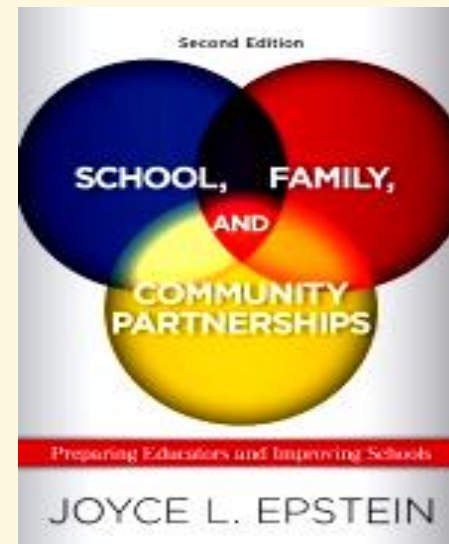
From Taylor and Francis
2012



From Taylor and Francis
2nd Edition, 2015



TEXT, SECOND EDITION
Westview Press-2011



MORE NNPS PUBLICATIONS

FROM NNPS
2020

PROMISING PARTNERSHIP PRACTICES



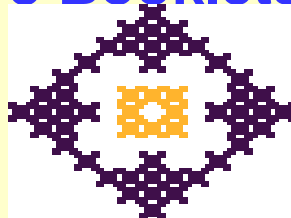
An annual collection from the members of the
National Network of Partnership Schools
Johns Hopkins University

2020

Edited by

Brenda G. Thomas, Briana S. Bostic, and Joyce L. Epstein

FROM NNPS
(18 Booklets)



SAMPLERS

Summary of Research &
Sample Engagement
Activities

READING, MATH
SCIENCE, WRITING
ARTS, HEALTH,
ATTENDANCE, BEHAVIOR,
HOMEWORK,
TRANSITIONS, FATHERS
COLLEGE and CAREERS,
PRESCHOOLS,
MIDDLE SCHOOLS,
HIGH SCHOOLS
GRANDPARENTS,
SUMMER LEARNING,
TESTS & ASSESSMENTS

FROM NNPS



Elem Literacy K-3
Math K-5
Middle Grades
Language Arts 6-8
Science 6-8
Math 6-8

See TIPS RESOURCES
on the
NNPS website

NNPS Member-Only Code: mem20NNPS

District Leaders: Important Reminders



- ✓ Reach out to assist principals with registering their school teams for training next week.
- ✓ Attend the training and support your school teams
- ✓ Reach out to your State Support Team coach and OSU with questions
- ✓ Look for your certificate of attendance in your email.

Impact:

Data Collection Activities in 2020-2021



Fall 2020

District Lead, and Action
Team surveys

Q & A



YOUR Assignment: **Put Your Knowledge Into Action!**



THANK YOU for your leadership on partnerships!





Connect with Us!
Ohiofamiliesengage.osu.edu
Twitter: @OhioEngage
Email: OhioSFEC@osu.edu