

FIRST ANNUAL



# Ohio Family Engagement

— LEADERSHIP SUMMIT —



THE OHIO STATE  
UNIVERSITY

CENTER ON EDUCATION AND  
TRAINING FOR EMPLOYMENT



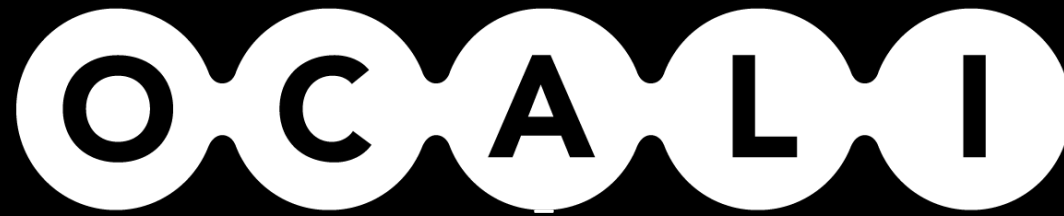
Ohio Statewide  
Family  
Engagement  
Center

at The Ohio State University



*Welcome!*

This event will start shortly.  
In the meantime, visit us at  
[OhioFamiliesEngage.osu.edu](http://OhioFamiliesEngage.osu.edu)



Inspiring Change for People  
with Disabilities

# **OICALI Resources to Support Engagement and Learning**

**The Ohio Family Engagement Leadership Summit  
September 17, 2020**

Jen Bavry, Program Director,  
Family and Community Outreach Center, OICALI

# Our Time Together

- OCALI overview
- Family and Community Outreach Center efforts to support families
- Community response to remote learning
- Learn more / Q&A



# About OCALI

## ***Vision- Why We Do What We Do***

People with disabilities have the opportunity to live their best lives.

## ***Mission- What We Do***

OCALI inspires change and promotes access to opportunities for people with disabilities.

## ***Action- How We Do What We Do***

OCALI informs public policy and develops and deploys practices grounded in linking research to real life.

# OCALE Centers & Resources



**Autism Center**



**Lifespan  
Transitions Center**



**THE OUTREACH CENTER**  
for Deafness and Blindness



**Center for the  
Young Child**



**Teaching Diverse  
Learners Center**



**Assistive Technology &  
Accessible Educational  
Materials Center**



**Family and Community  
Outreach Center**



**Universal Design  
for Learning Center**



Inspiring Change for People  
with Disabilities

# Family and Community Outreach Center

Equip and empower families to support the whole family

- Connect families to information and resources
- Inform policies that benefit families
- Raise awareness and acceptance in the community
- Cross-center collaboration to enhance family engagement



# Community Response: #HereToHelp

Connected a community of people navigating new ways of living, working, learning, and socializing

Resources to support:

- Access and Participation
- Accessible Learning Environments
- Routine and Structure
- Self-care
- Meaningful moments and fun!

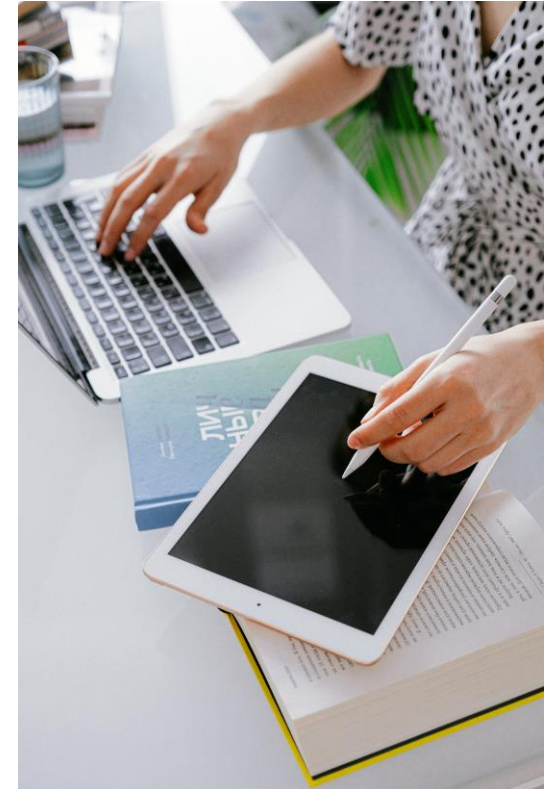




# Community Response: Help Continues

Continue efforts to assist educators, students, and families with new ways of learning, connecting, and providing support

- InspirED Virtual Learning Series
- Professional Development
- Online Learning Resources and Tools
- OCALICONLINE



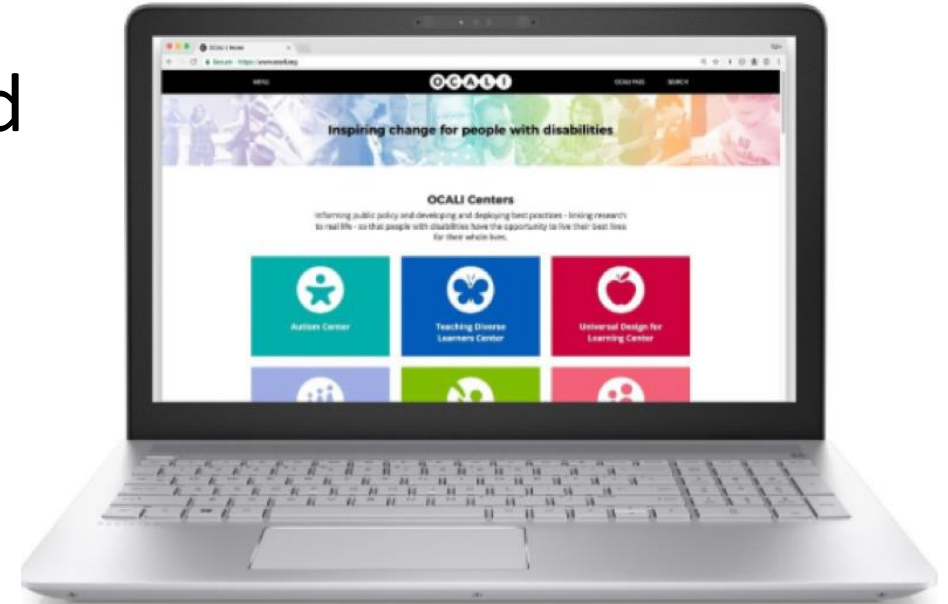
# Learn More!

Explore online resources

Register for webinars, online courses, and conference

Sign up for OCALI's monthly newsletter – *OCALI Now*

Follow Us on Facebook, Twitter, Instagram, YouTube, and LinkedIn



**Questions?**

**Thank You**

**visit us at [www.ocali.org](http://www.ocali.org)**

*Thank you for watching!*

**OhioFamiliesEngage.osu.edu**



Ohio Statewide  
**Family  
Engagement  
Center**

— at The Ohio State University —



**Ohio Statewide Family  
Engagement Center**



**OhioSFEC@osu.edu**



**@OhioEngage**



**@OhioEngage**