



# Family and Community Engagement Network

**Webinar – January 15, 2020; 10:00 – 11:30 AM**



**THE OHIO STATE UNIVERSITY**

---

CENTER ON EDUCATION AND  
TRAINING FOR EMPLOYMENT

Barbara Boone, Ph.D., Family Engagement Program Director [boone.32@osu.edu](mailto:boone.32@osu.edu)

Meredith Wellman, Ph.D., Program Manager, [wellman.87@osu.edu](mailto:wellman.87@osu.edu)

Thomas Capretta, Project Coordinator, [capretta.29@osu.edu](mailto:capretta.29@osu.edu)



Welcome!

This webinar will be recorded and posted for viewing  
on

<https://ohiofamiliesengage.osu.edu/fcenetworklogin/>

Password: networkmember

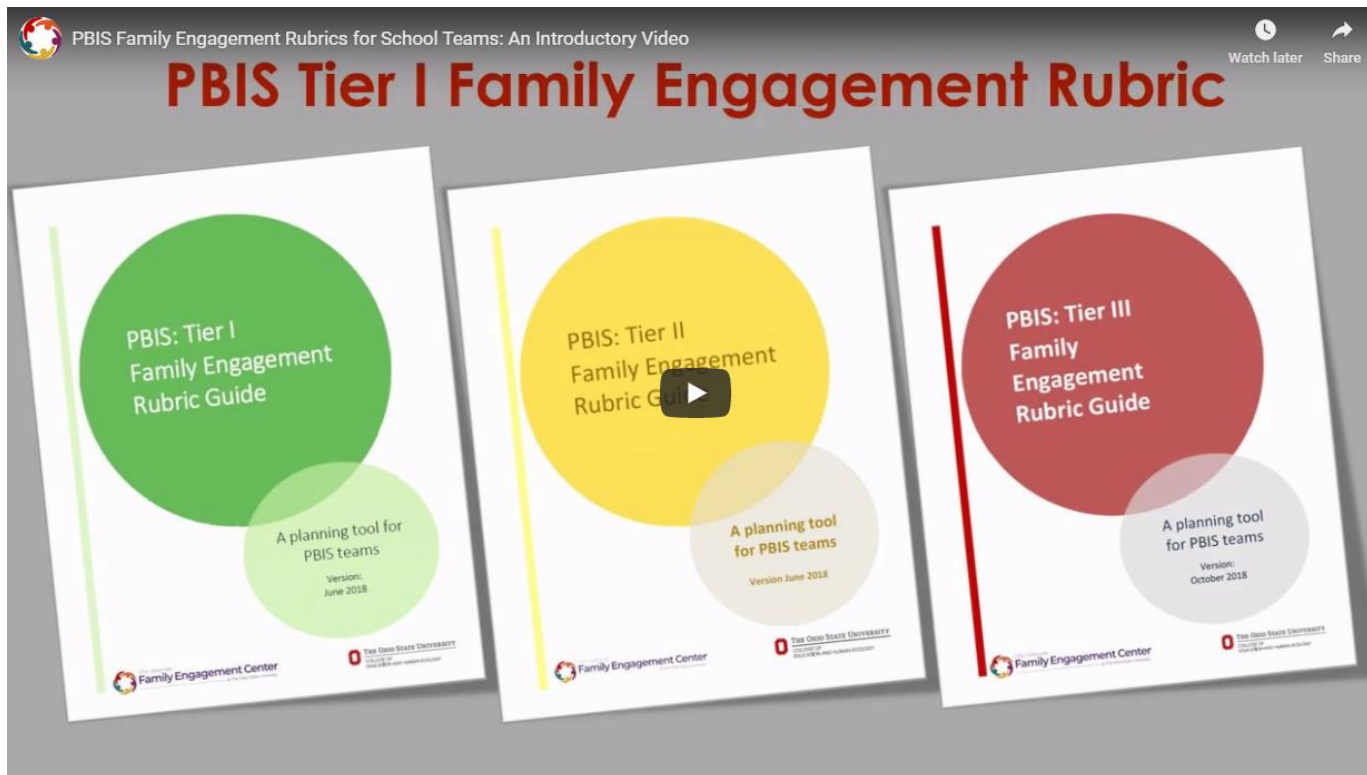
# Agenda

- Welcome and introductions, & what is one 2020 resolution?
- Share video for PBIS Family Engagement Rubrics
- Discuss: How can we incentivize schools to embed family engagement in their PBIS planning and strategies?
- Review \*new\* school choice resources from the Statewide Family Engagement Center
- Work Group Updates
- Updates from OEC
- Upcoming events
- What would you like to hear about at our upcoming meetings?





# PBIS Family Engagement Rubrics Introductory Video for School Teams



**THE OHIO STATE UNIVERSITY**

CENTER ON EDUCATION AND  
TRAINING FOR EMPLOYMENT

How can we  
incentivize  
family engagement as  
part of PBIS?



**THE OHIO STATE UNIVERSITY**

CENTER ON EDUCATION AND  
TRAINING FOR EMPLOYMENT

# School Choice Resource



Ohio Statewide  
**Family Engagement Center**  
Every Child. Every Family. Every School.

[Home](#) [For Families](#) [For Schools](#) [Stories from Ohio](#) [What is Family Engagement?](#) [About Us](#) [Contact Us](#)

## CHOOSING A SCHOOL IN OHIO

Would you like help selecting a school setting that is right for your child?

[Help please!](#)



Would you like to see all of the information in one place on school options in Ohio?

[Show me all!](#)



How can you tell if a school is a good fit for your child?

[Choosing a school](#)



This page is intended to provide families with information and tools to assist with choosing a school in Ohio. Please contact the Ohio Department of Education or the school you are interested in for more detailed and updated information.



**THE OHIO STATE UNIVERSITY**

CENTER ON EDUCATION AND  
TRAINING FOR EMPLOYMENT

# OEC Updates



**THE OHIO STATE UNIVERSITY**

CENTER ON EDUCATION AND  
TRAINING FOR EMPLOYMENT



# Work groups



# Literacy Work Group Updates

- Progress update
- Identifying resources to accompany the rubric
- *Do you have an amazing resource/website in the realm of early literacy and families that you feel should be included with the examples rubric?*
- Next meeting: Next FCE Network Meeting



# Great Meetings

## Work Group Updates

- Next Meeting: January 16, 2020, 3-4 PM
  - Join Zoom Meeting
  - <https://osu.zoom.us/j/5938652585>
  - Gathering existing resources for schools to be trained on having successful meetings at the school with families (being welcoming, providing access to materials in advance, etc)
  - Reminder: have tasks completed by tomorrow!



# PBIS Work Group Updates

- PBIS at Home Chart Revision, still in progress. Send visual examples?
- Next PBIS Work Group meeting:

Thursday, January 30, 2020

10:00am – 3:00PM

Bureau of Worker's Compensation,  
Pickerington



**THE OHIO STATE UNIVERSITY**

CENTER ON EDUCATION AND  
TRAINING FOR EMPLOYMENT

# Ohio Family Engagement Framework Update

Alexandra Nardo  
Ohio Department of Education



**THE OHIO STATE UNIVERSITY**

CENTER ON EDUCATION AND  
TRAINING FOR EMPLOYMENT

# Save the Date!

## Reframing the Conversation on Family Engagement Institute

**Friday, March 20, 2020**

8:30 AM – 4:00 PM

Bridgewater Banquet & Conference Center

10561 Sawmill Parkway

Powell, OH 43065



**Adamec** Communications

# IEL Conference

## Los Angeles May 27-29, 2020

Deadline extended to submit proposals: January 17, 2020

**IEL** Institute for Educational Leadership  
Innovation. Equity. Leadership.

COALITION FOR COMMUNITY SCHOOLS

Overview Attend Support Connect

**REGISTER NOW**

LOS ANGELES  
MAY 27-29, 2020

# RISE UP FOR EQUITY

**A NATIONAL SUMMIT  
ON COMMUNITY SCHOOLS  
& FAMILY ENGAGEMENT**

f t in

[Submit a Proposal or Become a Reviewer](https://www.cvent.com/c/abstracts/206bc3a3-c691-4891-b89d-ab75b9c77274)

<https://www.cvent.com/c/abstracts/206bc3a3-c691-4891-b89d-ab75b9c77274>

# Future Meeting Topics?



**THE OHIO STATE UNIVERSITY**

CENTER ON EDUCATION AND  
TRAINING FOR EMPLOYMENT



# Next Meeting

Webinar


Wednesday, February 26, 2020

10:00 – 11:30 AM



**THE OHIO STATE UNIVERSITY**

CENTER ON EDUCATION AND  
TRAINING FOR EMPLOYMENT



**Thank you for  
joining the webinar  
today.**

**See you soon!**